

# SEWER PROJECT: NEARING COMPLETION

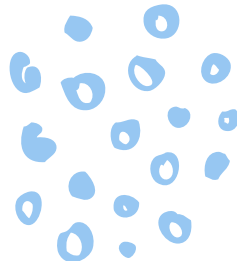
## 2021 PEBBLE RIDGE/ WOODRIDGE AND VICINITY SEWER PROJECT (PRWR)

### PAVING THE WAY

- Base paving is scheduled to begin in May for streets not already base paved
- Replacement curbing will continue to replace rolled curbing
- Streets that were base paved in 2020 will receive finish paving
- Have a concern about a road condition - Contact: [info@doylestown.org](mailto:info@doylestown.org)



Base pavement being laid



Water Line Being Installed

**How to connect to water & sewer can be found on the websites below:**

### CONTACT INFORMATION

JOHN BUTLER - CHIEF OPERATING OFFICER  
BCWSA | (215) 343-2538  
WEBSITE: [HTTP://WWW.BCWSA.NET/](http://www.bcwsa.net/)

KEITH HASS - DTMA EXECUTIVE DIRECTOR  
DTMA | (215) 348-9915  
WEBSITE: [WWW.DOYLESTOWNPA.ORG/DTMA](http://www.doylestownpa.org/dtma)

STEPHANIE MASON - TOWNSHIP MANAGER  
DOYLESTOWN TOWNSHIP | (215) 348-9915  
WEBSITE: [WWW.DOYLESTOWNPA.ORG](http://www.doylestownpa.org)

### SEWER INSTALLATION

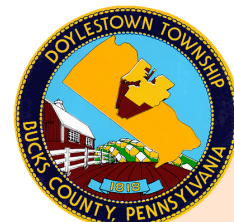
- Pipe installation for sewers is progressing as quickly as conditions allow
- Doe Run Road, Militia Hill Drive, and Almshouse Road will be underway later this spring
- Weekly updates can be accessed on the Doylestown Township and BCWSA website listed below
- Sewer progress map can be found on the Doylestown Township Website

### WATER MAIN COMPLETE

- Water main construction is complete except Springdale Road which will follow sewer work

### STORMWATER SYSTEM UPDATE

- Stormwater system is being upgraded as needed



**For More Information Visit:** <https://doylestownpa.org/twp-information/sewerproject-2/>