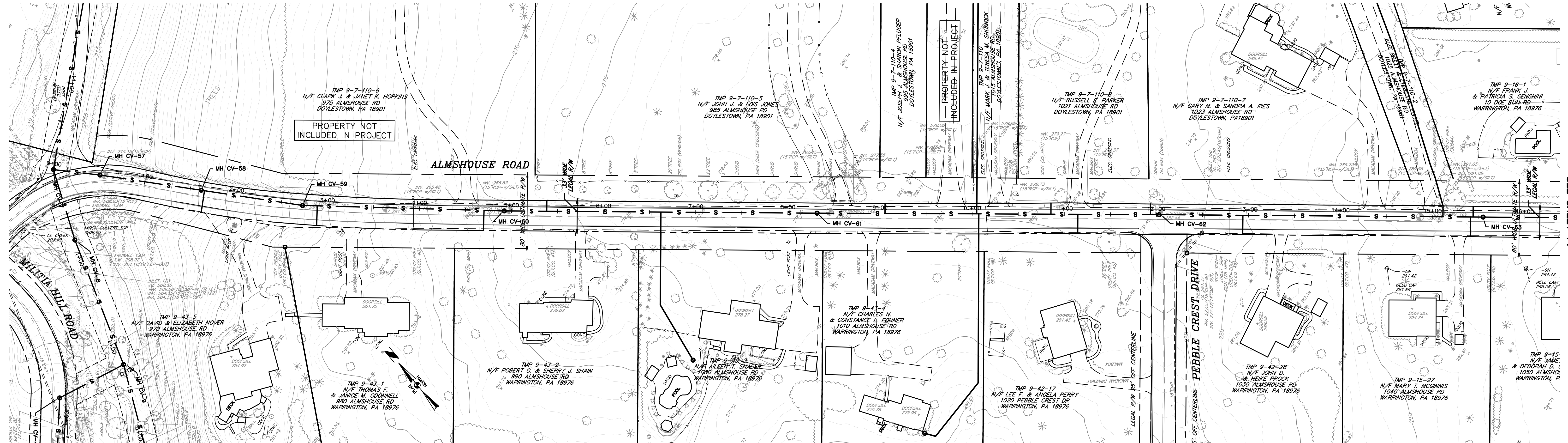
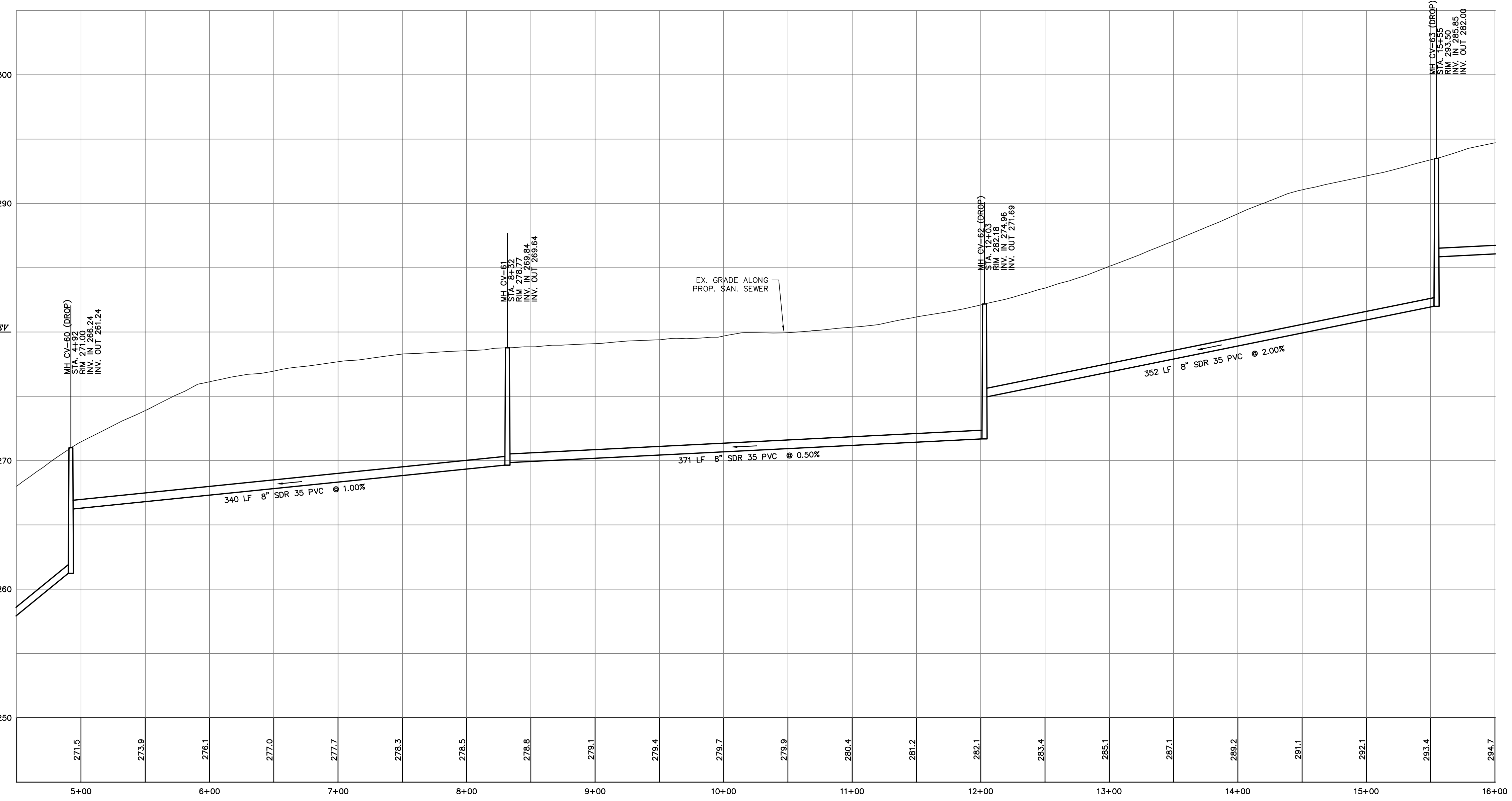
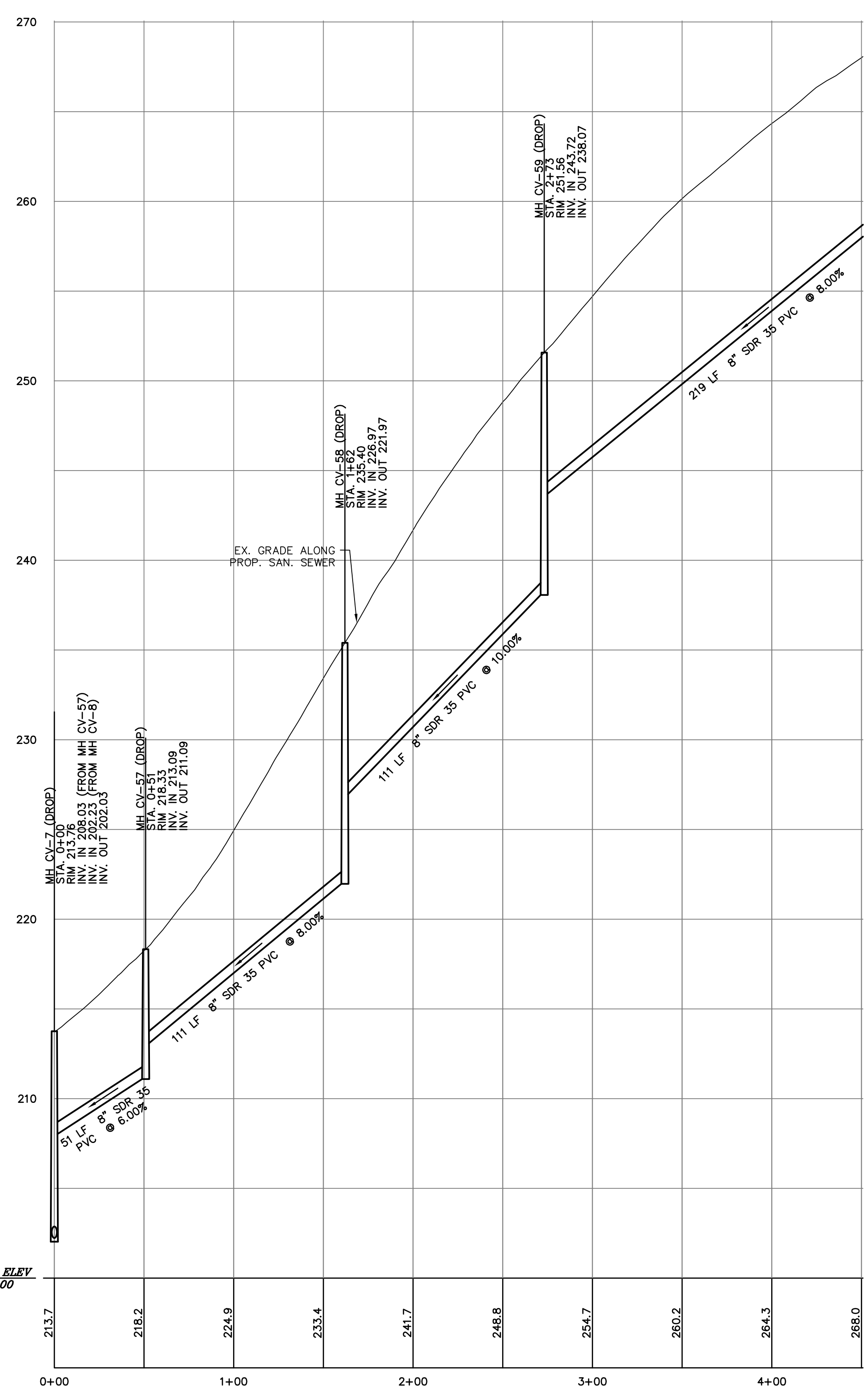


SEE SHEET 4

SEE SHEET 14



SEE SHEET 11 SEE SHEET 5



PROFILE: ALMSHOUSE ROAD (STA. 0+00 TO 16+00)  
SCALE: HORIZ. 1"=50'  
VERT. 1"=5'

ONLY THOSE PLANS INCORPORATING THE RAISED PROFESSIONAL SEAL SHOULD BE CONSIDERED OFFICIAL AND RELIED UPON BY USER. THIS PLAN IS PREPARED SPECIFICALLY FOR THE CLIENT AND PROJECT DESIGNATED HEREON. MODIFICATION, REVISION, DUPLICATION OR USE WITHOUT THE CONSENT OF GILMORE & ASSOCIATES, INC. IS PROHIBITED. © COPYRIGHT 2015 GILMORE & ASSOCIATES, INC. ALL RIGHTS RESERVED.

LOCATIONS OF EXISTING UNDERGROUND UTILITIES/FACILITIES SHOWN HEREON HAVE BEEN DEVELOPED FROM RECORDS, FIELD MARKOUTS BY UTILITY OWNERS, AND/OR ABOVE-GROUND OBSERVATION OF THE SITE. NO EXCAVATIONS WERE PERFORMED IN THE PREPARATION OF THESE DRAWINGS; THEREFORE ALL UTILITIES SHOWN SHOULD BE CONSIDERED APPROXIMATE IN LOCATION, DEPTH, AND SIZE. THE POTENTIAL EXISTS FOR OTHER UNDERGROUND UTILITIES/FACILITIES TO BE PRESENT WHICH ARE NOT SHOWN ON THE DRAWINGS. ONLY THE VISIBLE LOCATIONS OF UNDERGROUND UTILITIES/FACILITIES AT THE TIME OF FIELD SURVEY SHALL BE CONSIDERED TRUE AND ACCURATE. COMPLETENESS OR ACCURACY OF UNDERGROUND UTILITIES/FACILITIES ARE NOT GUARANTEED BY GILMORE & ASSOCIATES, INC.

ALL CONTRACTORS WORKING ON THIS PROJECT SHALL VERIFY LOCATION AND DEPTH OF ALL UNDERGROUND UTILITIES/FACILITIES PRIOR TO START OF WORK AND SHALL COMPLY WITH THE REQUIREMENTS OF P.L. 852, NO. 287 DECEMBER 10, 1974 AS LAST AMENDED ON OCTOBER 8, 2008, PENNSYLVANIA ACT 121. GILMORE & ASSOCIATES, INC. HAS OBTAINED A P.A.-ONE CALL SERIAL NUMBER AS NOTED HEREON FOR DESIGN PURPOSES ONLY.

PENNSYLVANIA ONE CALL SYSTEM, INC.  
925 Main Run Road  
West Pitts, Pennsylvania  
15122 - 1078

BEFORE YOU DIG ANYWHERE IN PENNSYLVANIA: CALL 1-800-242-1778. NON-MEMBERS MUST BE CONTACTED DIRECTLY. PA LAW REQUIRES THREE WORKING DAYS NOTICE TO UTILITIES BEFORE YOU EXCAVATE, DRILL, BLAST OR DEMOLISH.

SEE SHEET NO. 1 FOR SERIAL NUMBERS

OWNER: BUCKS COUNTY WATER & SEWER AUTHORITY 1275 ALMSHOUSE ROAD WARRINGTON, PA 18976		MUNICIPAL FILE NO.: XX	
TAX MAP PARCEL NO.: XX		TOTAL AREA: TOTAL LOTS: XX XX	
DATE: 1-15-15		SCALE: AS NOTED	
<p>ALMSHOUSE ROAD (STA. 0+00 TO 16+00) PEBBLE RIDGE / WOODRIDGE AREA SANITARY SEWERS</p> <p>DOYLESTOWN TOWNSHIP, BUCKS COUNTY, PENNSYLVANIA</p> <p><b>GILMORE &amp; ASSOCIATES, INC.</b> ENGINEERING &amp; CONSULTING SERVICES</p> <p>66 EAST BUTLER AVENUE, SUITE 100, NEW BRITAIN, PA 19151-5108 • (215) 365-4200 • www.gilmore-assoc.com</p>			
DESIGNED BY: BMB/TJF/HDS/JM		DRAWN BY: CB/BMB/TJF	
CHECKED BY: SLR		JOB NO.: 2013-05071 SHEET NO.: 13 OF 32	