

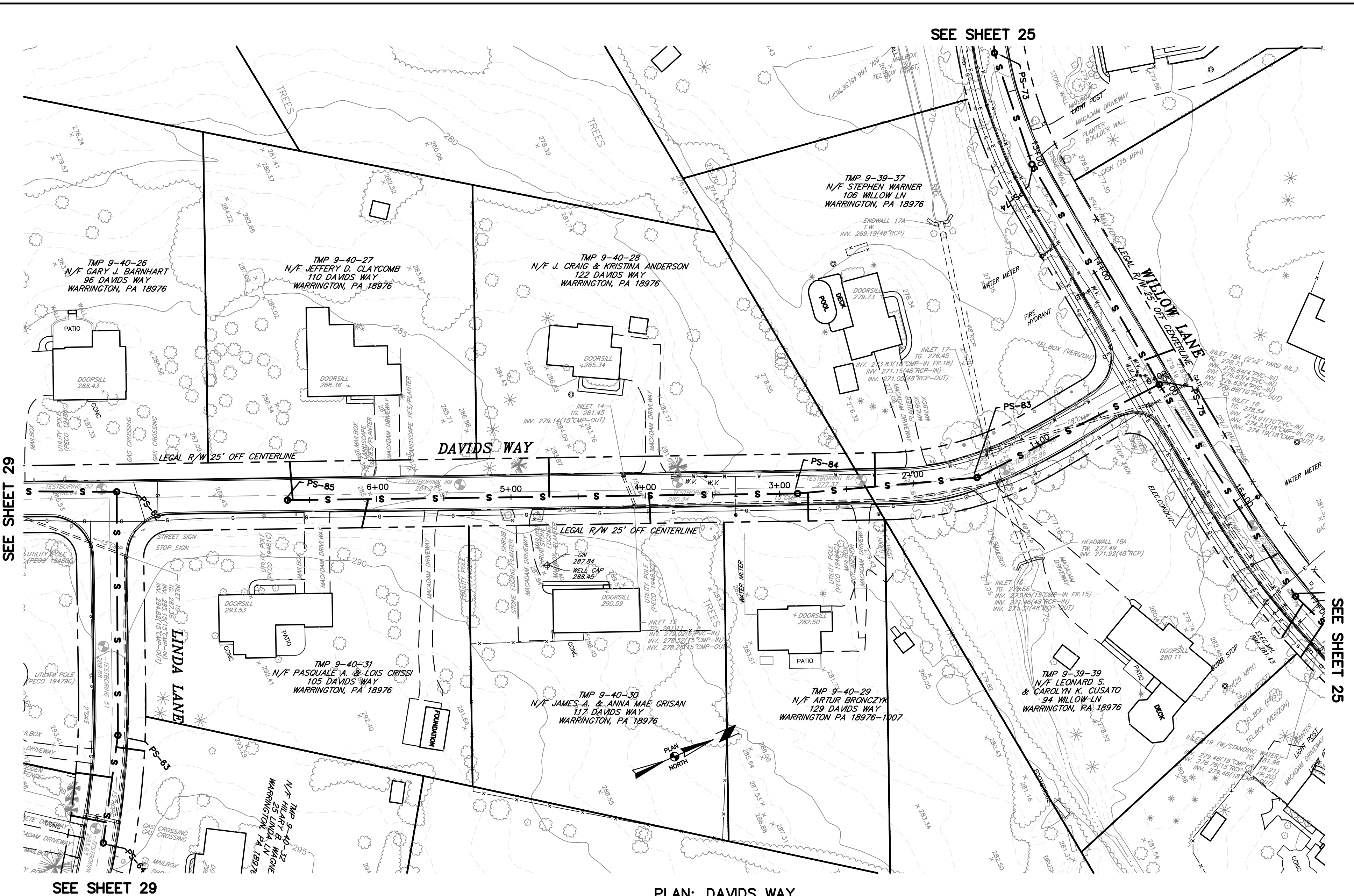
PLAN: EASEMENTS FROM OLD NEW ROAD TO WILLOW LANE

SCALE: 1"=50'

SEE SHEET 27

SEE SHEET 24

SEE SHEET 25



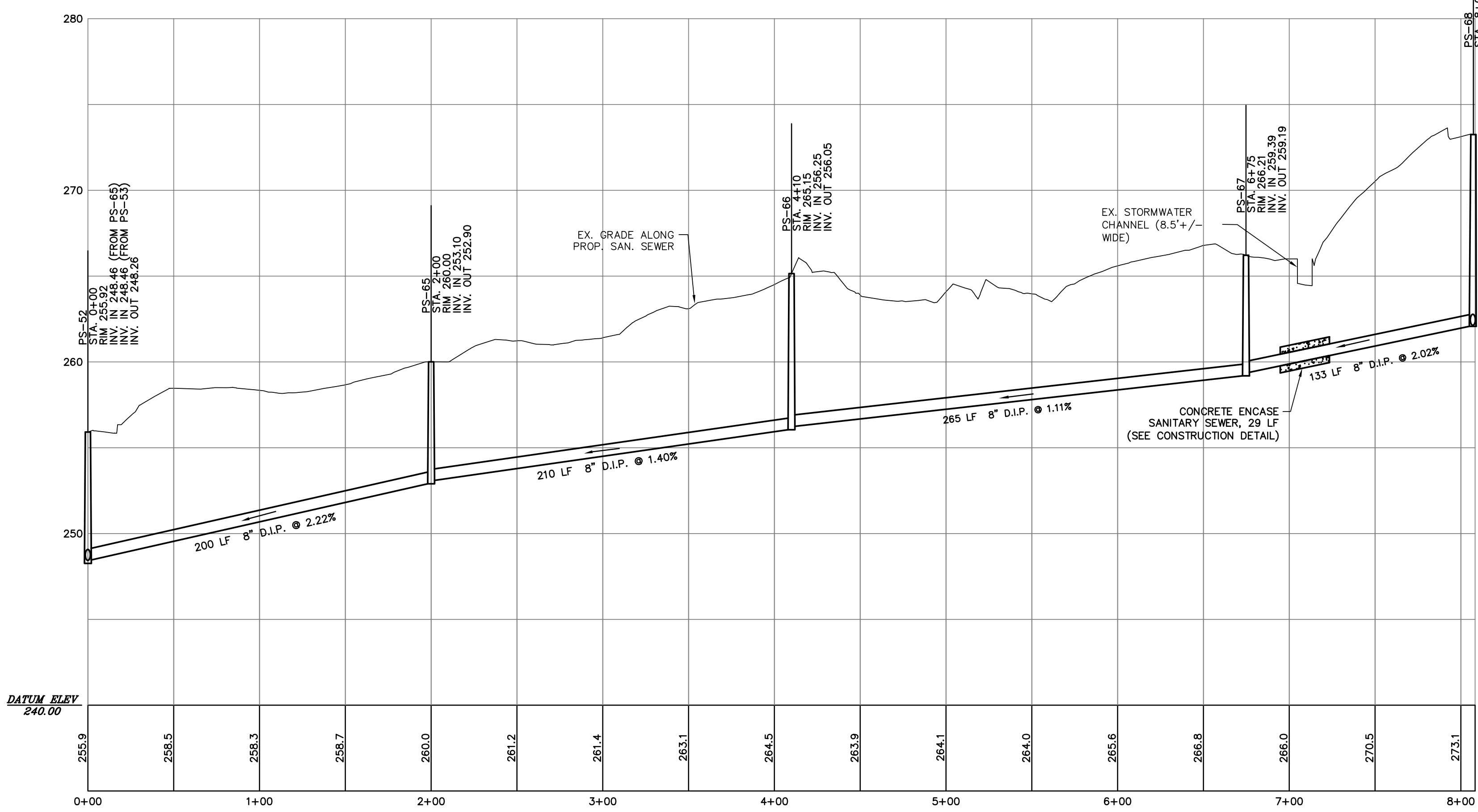
PLAN: DAVIDS WAY

SCALE: 1"=50'

SEE SHEET 29

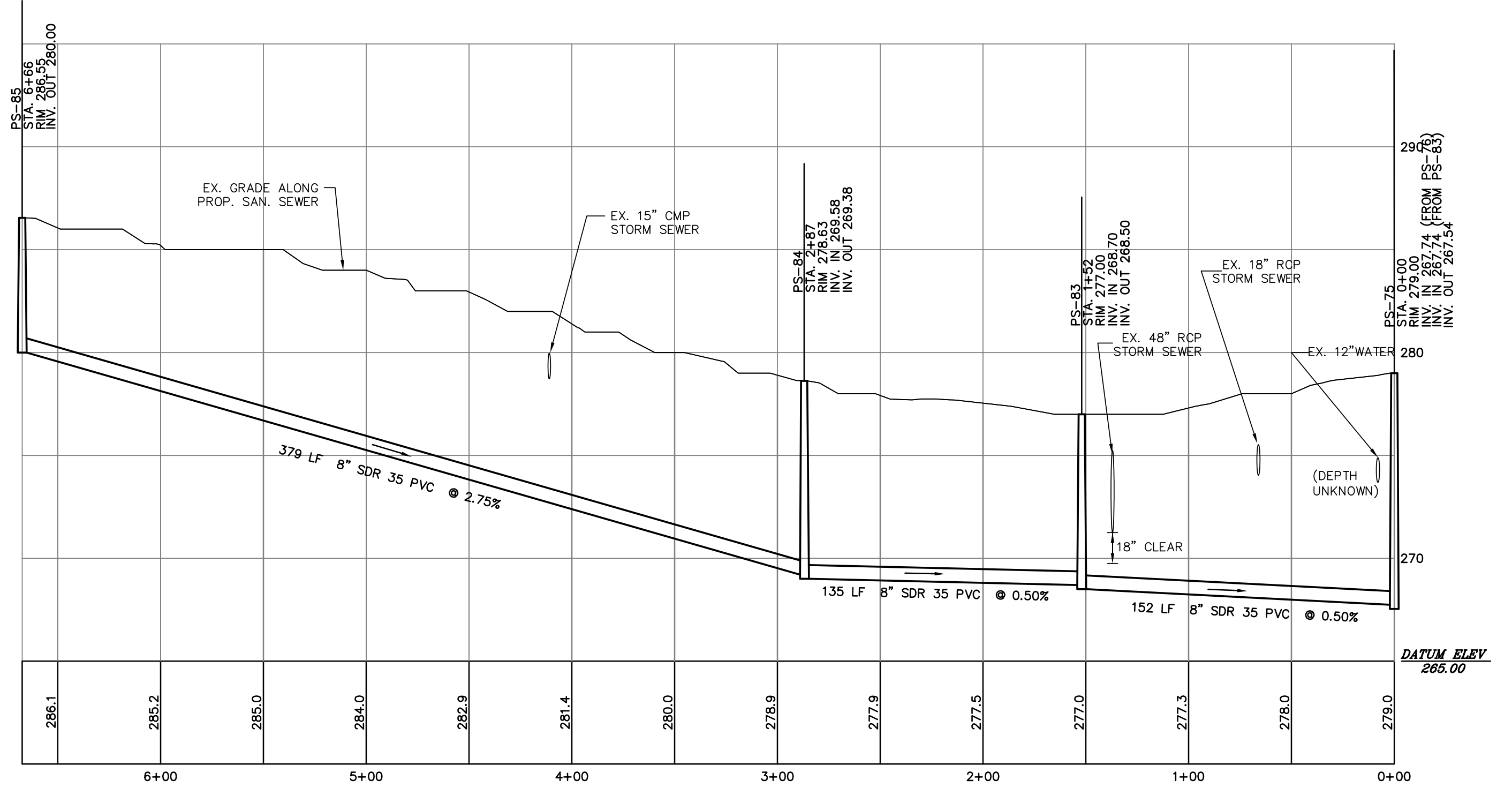
SEE SHEET 25

SEE SHEET 25



PROFILE: EASEMENTS FROM OLD NEW ROAD TO WILLOW LANE (STA. 0+00 TO 8+08)

SCALE: HORIZ. 1"=50'
VERT. 1"=5'



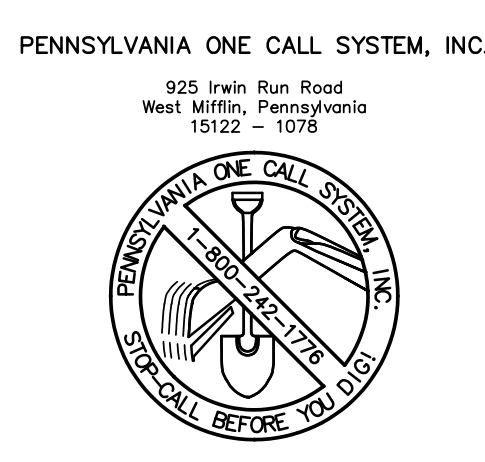
PROFILE: DAVIDS WAY (STA. 0+00 TO 6+66)

SCALE: HORIZ. 1"=50'
VERT. 1"=5'

ONLY THOSE PLANS INCORPORATING THE RAISED PROFESSIONAL SEAL SHOULD BE CONSIDERED OFFICIAL AND RELIED UPON BY USER. THIS PLAN IS PREPARED SPECIFICALLY FOR THE CLIENT AND PROJECT DESIGNATED HEREON. MODIFICATION, REVISION, DUPLICATION OR USE WITHOUT THE CONSENT OF GILMORE & ASSOCIATES, INC. IS PROHIBITED. © COPYRIGHT 2015 GILMORE & ASSOCIATES, INC. ALL RIGHTS RESERVED.

LOCATIONS OF EXISTING UNDERGROUND UTILITIES/FACILITIES SHOWN HEREON HAVE BEEN DEVELOPED FROM RECORDS, FIELD MARKOUTS BY UTILITY OWNERS, AND/OR ABOVE-GROUND OBSERVATION OF THE SITE. NO EXCAVATIONS WERE PERFORMED IN THE PREPARATION OF THESE DRAWINGS; THEREFORE ALL UTILITIES SHOWN SHOULD BE CONSIDERED APPROXIMATE IN LOCATION, DEPTH, AND SIZE. THE POTENTIAL EXISTS FOR OTHER UNDERGROUND UTILITIES/FACILITIES TO BE PRESENT WHICH ARE NOT SHOWN ON THE DRAWINGS. ONLY THE VISIBLE LOCATIONS OF UNDERGROUND UTILITIES/FACILITIES AT THE TIME OF FIELD SURVEY SHALL BE CONSIDERED TRUE AND ACCURATE. COMPLETENESS OR ACCURACY OF UNDERGROUND UTILITIES/FACILITIES ARE NOT GUARANTEED BY GILMORE & ASSOCIATES INC.

ALL CONTRACTORS WORKING ON THIS PROJECT SHALL VERIFY LOCATION AND DEPTH OF ALL UNDERGROUND UTILITIES/FACILITIES PRIOR TO START OF WORK AND SHALL COMPLY WITH THE REQUIREMENTS OF P.L. 852, NO. 287 DECEMBER 10, 1974 AS LAST AMENDED ON OCTOBER 13, 2008, PENNSYLVANIA ACT 121. GILMORE & ASSOCIATES, INC. HAS OBTAINED A PA-ONE CALL SERIAL NUMBER AS NOTED HEREON FOR DESIGN PURPOSES ONLY.



BEFORE YOU DIG ANYWHERE IN PENNSYLVANIA: CALL 1-800-242-1776. PA LAW REQUIRES THREE WORKING DAYS NOTICE TO UTILITIES BEFORE YOU EXCAVATE, DRILL, BLAST OR DEMOLISH.

REGISTERED PROFESSIONAL ENGINEER
ALEXANDER DYKE
NO. 054801E

2	ISSUED FOR CONSTRUCTION	8-3-18	JM
REV.	DESCRIPTION	DATE	BY
TAX MAP PARCEL NO.:	XX		
TOTAL AREA:	XX	TOTAL LOTS:	XX
DATE:	1-15-15	SCALE:	AS NOTED
EASEMENTS FROM OLD NEW ROAD TO WILLOW LANE; DAVIDS WAY (STA. 0+00 TO 6+66) PEBBLE RIDGE / WOODRIDGE AREA SANITARY SEWERS DOYLESTOWN TOWNSHIP, BUCKS COUNTY, PENNSYLVANIA			
GILMORE & ASSOCIATES, INC. ENGINEERING & CONSULTING SERVICES 65 EAST BUTLER AVENUE, SUITE 100, NEW BRIGHT, PA 19071-5109 • (215) 363-4200 • www.gilmore-assoc.com			
JOB NO.: 2013-05071 SHEET NO.: 26 OF 32			
DESIGNED BY:	BMB/TJF/HDS/JM	DRAWN BY:	CB/BMB/TJF
CHECKED BY:	SLR		