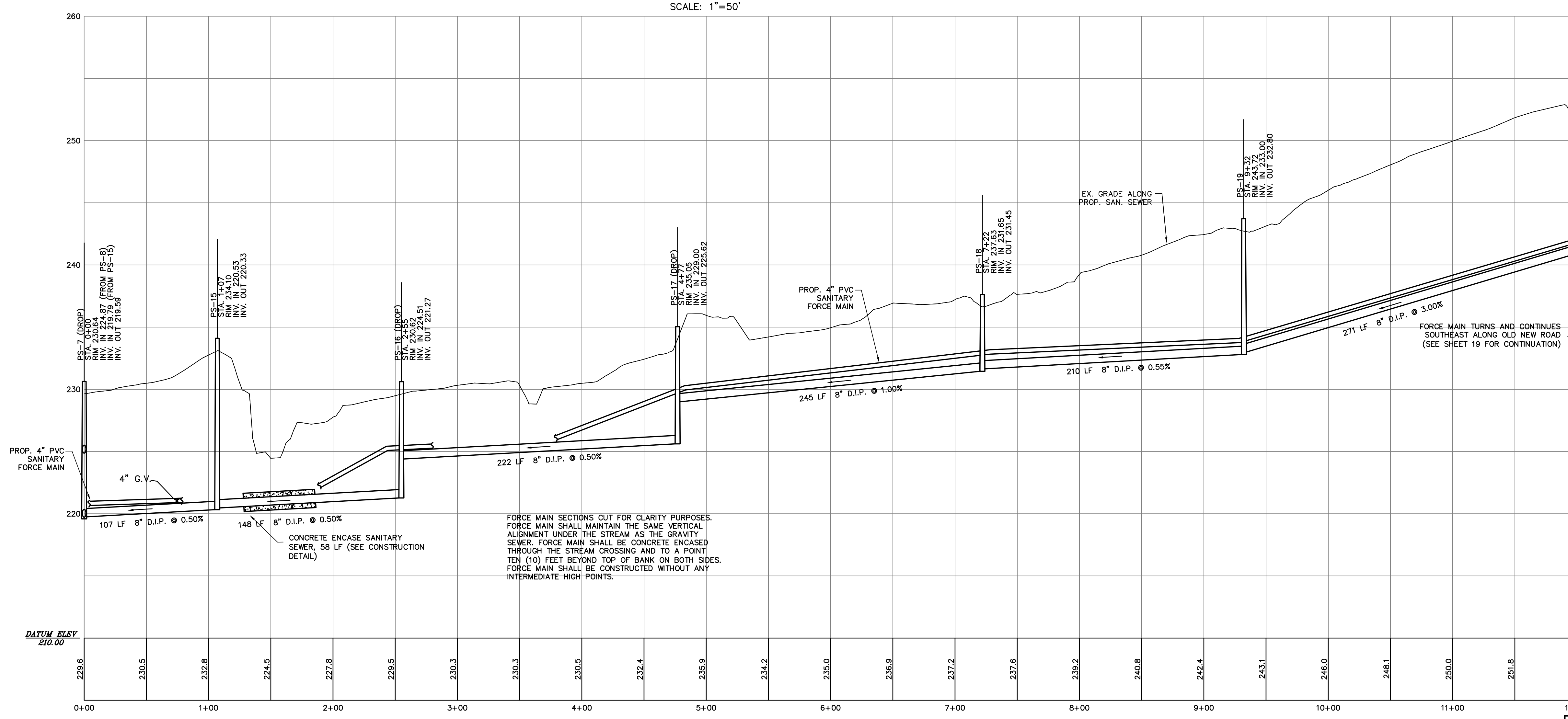


PLAN: EASEMENTS TO OLD NEW ROAD, WEST RUN

SCALE: 1"=50'



PROFILE: EASEMENTS TO OLD NEW ROAD, WEST RUN (STA. 0+00 TO 12+03)

SCALE: HORIZ. 1"=50'  
VERT. 1"=5'

FORCE MAIN SECTIONS CUT FOR CLARITY PURPOSES. FORCE MAIN SHALL MAINTAIN THE SAME VERTICAL ALIGNMENT UNDER THE STREAM AS THE GRAVITY SEWER. FORCE MAIN SHALL BE CONCRETE ENCASED THROUGH THE STREAM CROSSING AND TO A POINT TEN (10) FEET BEYOND TOP OF BANK ON BOTH SIDES. FORCE MAIN SHALL BE CONSTRUCTED WITHOUT ANY INTERMEDIATE HIGH POINTS.

LOCATIONS OF EXISTING UNDERGROUND UTILITIES/FACILITIES SHOWN HEREON HAVE BEEN DEVELOPED FROM RECORDS, FIELD MARKOUTS BY UTILITY OWNERS, AND/OR ABOVE-GROUND OBSERVATION OF THE SITE. NO EXCAVATIONS WERE PERFORMED IN THE PREPARATION OF THESE DRAWINGS; THEREFORE ALL UTILITIES SHOWN SHOULD BE CONSIDERED APPROXIMATE IN LOCATION, DEPTH, AND SIZE. THE POTENTIAL EXISTS FOR OTHER UNDERGROUND UTILITIES/FACILITIES TO BE PRESENT WHICH ARE NOT SHOWN ON THE DRAWINGS. ONLY THE VISIBLE LOCATIONS OF UNDERGROUND UTILITIES/FACILITIES AT THE TIME OF FIELD SURVEY SHALL BE CONSIDERED TRUE AND ACCURATE. COMPLETENESS OR ACCURACY OF UNDERGROUND UTILITIES/FACILITIES ARE NOT GUARANTEED BY GILMORE & ASSOCIATES INC.

ALL CONTRACTORS WORKING ON THIS PROJECT SHALL VERIFY LOCATION AND DEPTH OF ALL UNDERGROUND UTILITIES/FACILITIES PRIOR TO START OF WORK AND SHALL COMPLY WITH THE REQUIREMENTS OF P.L. 852, NO. 287 DECEMBER 10, 1974 AS LAST AMENDED ON OCTOBER 14, 2008, PENNSYLVANIA ACT 121. GILMORE & ASSOCIATES, INC. HAS OBTAINED A P.A.-ONE CALL SERIAL NUMBER AS NOTED HEREON FOR DESIGN PURPOSES ONLY.

PENNSYLVANIA ONE CALL SYSTEM, INC.  
925 Main Run Road  
West Mifflin, Pennsylvania  
15122 - 1078



BEFORE YOU DIG ANYWHERE IN PENNSYLVANIA CALL 1-800-242-1778. NON-MEMBERS MUST BE CONTACTED DIRECTLY. PA LAW REQUIRES THREE WORKING DAYS NOTICE TO UTILITIES BEFORE YOU EXCAVATE, DRILL, BLAST OR DEMOLISH.  
SEE SHEET NO. 1 FOR SERIAL NUMBERS

OWNER:  
BUCKS COUNTY WATER & SEWER AUTHORITY  
1275 ALMSHOUSE ROAD  
WARRINGTON, PA 18976  
MUNICIPAL FILE NO.:  
XX  
DATE: 1-15-15  
SCALE: AS NOTED

2	ISSUED FOR CONSTRUCTION	8-3-18	JM
REV.	DESCRIPTION	DATE	BY
TAX MAP PARCEL NO.:	XX		
TOTAL AREA:	XX	TOTAL LOTS:	XX
<p><b>EASEMENTS TO OLD NEW ROAD, WEST RUN (STA. 0+00 TO 12+03)</b>  <b>PEBBLE RIDGE / WOODRIDGE AREA</b>  <b>SANITARY SEWERS</b>          DOYLESTOWN TOWNSHIP, BUCKS COUNTY, PENNSYLVANIA</p>			
<p><b>GILMORE &amp; ASSOCIATES, INC.</b>          ENGINEERING &amp; CONSULTING SERVICES          65 EAST BUTLER AVENUE, SUITE 100, NEW BRIGHT, PA 19815-1109 • (215) 345-2100 • www.gilmore-assoc.com</p>			
<p>REGISTERED PROFESSIONAL ENGINEER          ALEXANDER DYKE          No. 054801E</p>			
<p>SCALE: 1"=50'</p>			
<p>DESIGNED BY: BMB/TJF/HDS/JM          DRAWN BY: CB/BMB/TJF          CHECKED BY: SLR</p>			
<p>JOB NO.: 2013-05071          SHEET NO.: 18 OF 32</p>			

ONLY THOSE PLANS INCORPORATING THE RAISED PROFESSIONAL SEAL SHOULD BE CONSIDERED OFFICIAL AND RELIED UPON BY USER. THIS PLAN IS PREPARED SPECIFICALLY FOR THE CLIENT AND PROJECT DESIGNATED HEREON. MODIFICATION, REVISION, DUPLICATION OR USE WITHOUT THE CONSENT OF GILMORE & ASSOCIATES, INC. IS PROHIBITED. © COPYRIGHT 2015 GILMORE & ASSOCIATES, INC. ALL RIGHTS RESERVED.