

DOYLESTOWN TOWNSHIP



"PRESERVING THE PAST, EMBRACING THE FUTURE"

FALL 2020 | VOLUME 17 | ISSUE III

Chairman's Message

By Barbara Lyons, Chairman of the Board of Supervisors

COVID has impacted every facet of our lives. You don't need me to recap the effects of this pandemic on us, our communities and less than certain, our futures.

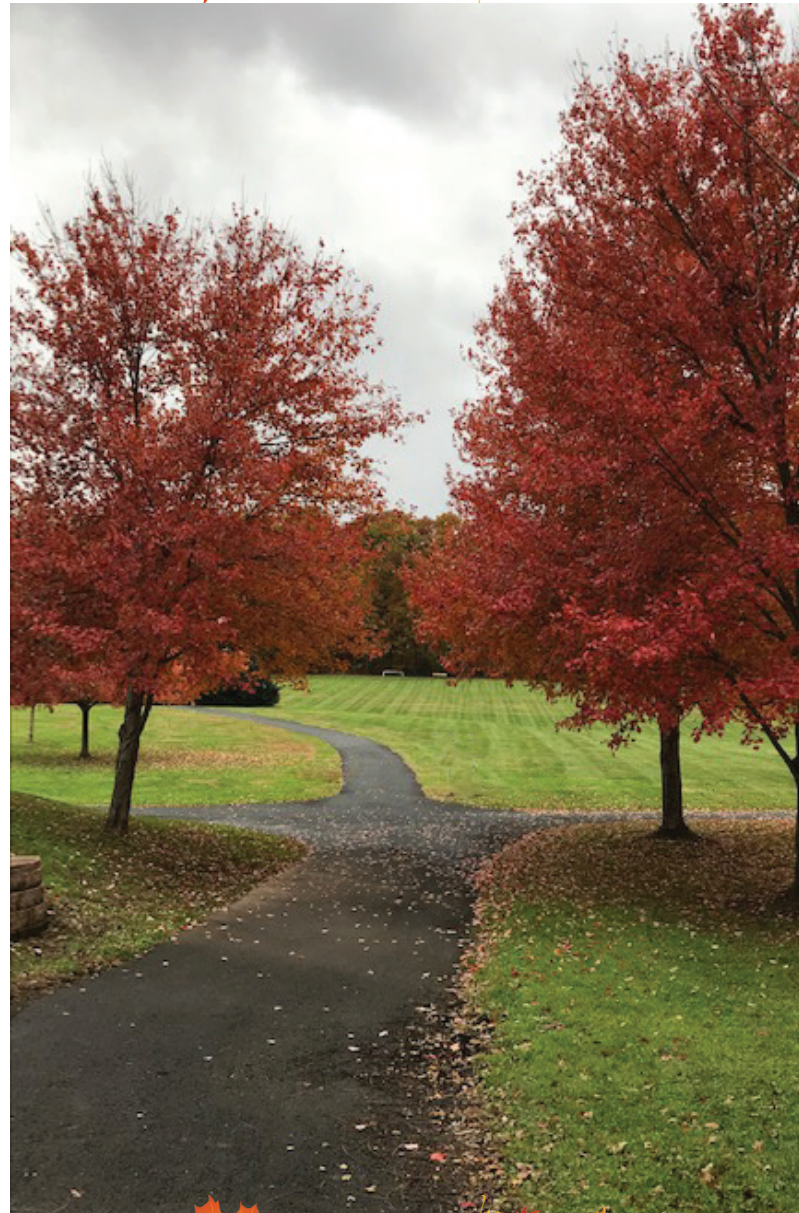
What I can say with certainty is Doylestown Township has met the challenge.

Your Township from the get – go has provided complete services. We have created and maintained a healthy and safe work environment, remained open to the public, provided remote access for our residents, community partners, and for all who have business in the Township. In addition, our volunteer boards and commissions have not skipped a beat with their 2020 projects and planning.

The Board of Supervisors' meetings continued to stream live, as always, with open access via telephone for any resident unable to attend the meetings. Participants were also encouraged to call in and communicate in real time with the Board. The Board meetings are thereafter broadcasted on DTV, and available on the township website.

Since March, our volunteers working with township staff, have engaged in numerous projects and produced the following programs: Parks and Recreation hosted virtual programs including Engineering for Kids, CSI Camp, Chess, and Camp in a Bag.

Continued on page 3



Doylestown Township

Government Information

Township Offices

Office Hours:

Monday - Friday
8:30AM to 4:30PM

425 Wells Roads
Doylestown, PA 18901
(215) 348-9915

www.doylestownpa.org

Stay Connected!

Subscribe to our monthly E-News email blast to stay in the know! Submit your email address on our homepage:
www.doylestownpa.org

Follow us on social media
@doylestowntwp



Board of Supervisors

Left to Right:

- Nancy Santacecilia
- Ryan Manion, Vice Chairman
- Jennifer Herring
- Barbara N. Lyons, Chairman
- Dan Wood

Township Manager

Stephanie Mason

Continued from page 1:

Socially distanced events took place including the Annual Golf Outing, "Hocus Pocus" the Movie in the Park, t-ball and tennis. The Doylestown Dog Park continued with dog training and the ever - popular Fido Float which was held at Fanny Chapman Pool.



The Townships Environmental Advisory Council worked with Doylestown Borough and Schumacher & Associates to plant 21 native trees at the Poole's Corner Park and Ride thanks to a grant from Bucks Beautiful. In addition, the Bike and Hike Committee sponsored "Step into September on the Trails" an event to celebrate PA trails month. This event was made possible with a grant from the Pennsylvania Environmental Council and PA Department of Conservation & Natural Resources.



With the help of our Ways and Means Committee and the Pension Advisory Committee the Board is currently preparing the 2021 Budget and five year forecast. The Doylestown Township Municipal Authority is building connections throughout the Township providing safe drinking water to as many residents as possible. Our Police, Public Works and Emergency Management stand ready to assist and safeguard our residents from the sometimes tragic and unsuspected events that just happen, and we can be assured they are committed to keeping us safe and respond with intelligent and competent protocols.

My Mom used to say "where there's a will there's a way". We each have trudged through the uncertainty of these days, determined to be undeterred by the challenges. So, it has been with your Township. We are grateful to our dedicated and hard - working staff and our many volunteers. Just thinking about all of this, makes me take a moment of gratitude for the wonderful community in which we live.



Lieutenant Charles Zeigler Sworn In



On Tuesday, August 18, 2020 the swearing in of Police Lieutenant, Charles Zeigler took place. Barbara N. Lyons, Chairman of the Board of Supervisors, administered the Oath of Office.



Get To Know Lieutenant Charles Zeigler!

With my recent promotion to Lieutenant with the Doylestown Township Police Department in August, I wanted to take a few minutes to introduce myself. I am originally from Bensalem Pennsylvania and I graduated from Bensalem High School in 1996. Immediately after High School, I began working in the residential construction field. After several years in the construction trades I wanted a career change and applied and was accepted to attend the Temple University Police Academy in May of 2002. I attended the police academy full time and graduated in October of 2002.

In November of 2002 I applied to the Doylestown Township Police Department and was appointed on January 28, 2003. During my tenure, I have held various positions within the department and had the opportunity to participate in many different areas of Law Enforcement. I began coordinating the Townships DUI enforcement program in 2004 which included both roving patrols and DUI checkpoints in the Township. After several years of coordinating the DUI enforcement program I began to work with other officers in Bucks County investigating Narcotics offences. At this point in my career I wanted to transition into a supervisory role within the department and attended numerous training programs organized by Penn State Justice and Safety Institute, namely POSIT and POLEX.

I was promoted to the position of Corporal in May of 2009 and promoted to the position of Sergeant in February of 2010. I remained a patrol supervisor for various different squads during this period of my career and really enjoyed working with all of the members of this department.

In October of 2017 to February of 2018 I had the privilege to attend the Northwestern School of Police Staff and Command. This training was very intense and prepared me to advance my career towards a more administrative role with the department as well as provided me with a large network of administrative police officer's throughout the Commonwealth. Since completing Northwestern, I have since returned to school to continue my education and assist the Doylestown Township Police Department with providing the best police service to the residents as I can. I truly enjoy my career and look forward to many more years with the Doylestown Township Police Department.

SEPTIC
MANAGEMENT
REMINDER

DUE TO COVID-19

CYCLE II RESIDENTS HAVE BEEN
GIVEN AN EXTENSION UNTIL
MARCH 2021

Bucks County's Household Hazardous Waste Collection Events This Fall

The events are scheduled as follows –

- November 21 | Lower Bucks Campus of Bucks County College in Newtown, 275 Swamp Rd, Newtown, PA 18940.
- November 22 | Lower Bucks Campus of Bucks County College in Newtown 275 Swamp Rd, Newtown, PA 18940.

Due to new regulations set by the PA Department of Environmental Protection, residents are required to register for the events. Visit <http://www.buckscounty.org/> for more information.

Leaf & Yard Waste Pick-Up

At the beginning of the year, the licensed trash haulers inform the Township of the dates for leaf pick-up. The township makes this information available to residents by posting it on the Township's website and social media. The dates differ depending on your trash hauler.

See the dates below and call your trash hauler with any questions or concern regarding your fall leaf pick-up.

Advanced Disposal : 11/7/2020 & 12/5/2020

DelGuericco, Inc. : As Needed

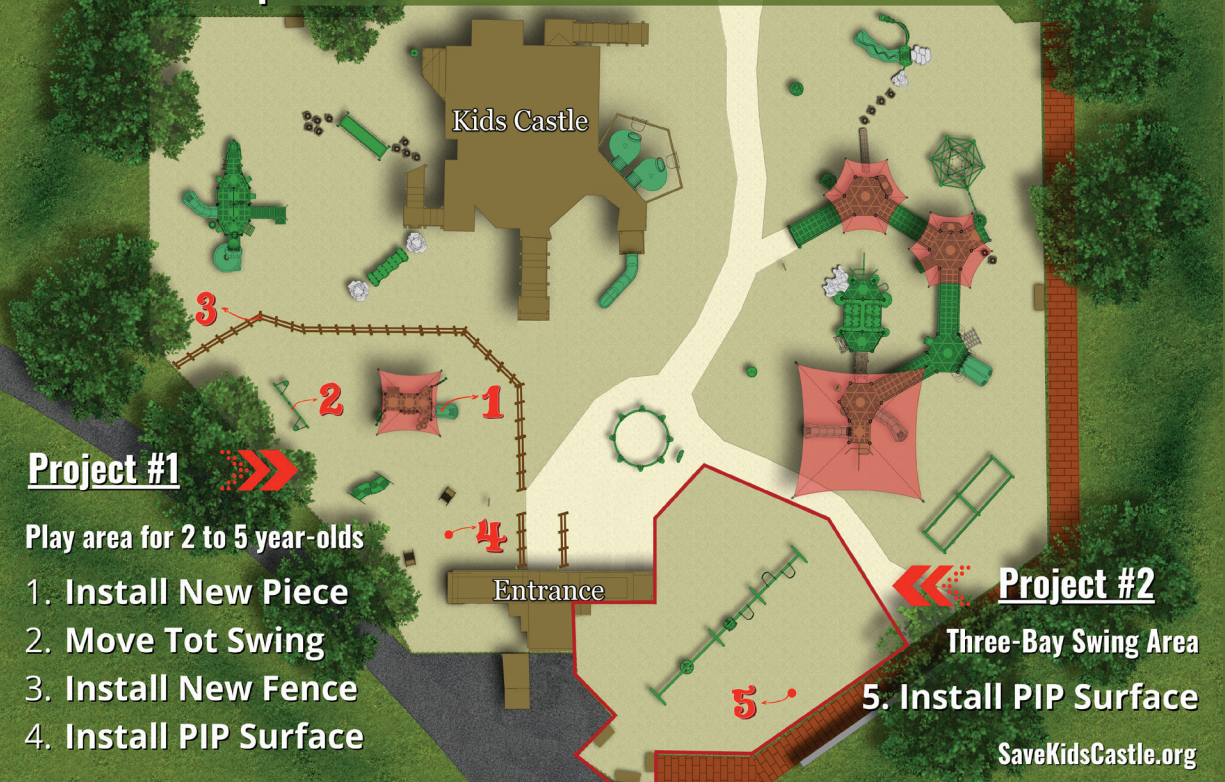
Republic Services : 11/21/2020

Waste Management : 11/14/2020

Whitetail Disposal : 11/14/2020



Improvements for All Abilities Continue at Kids Castle



Project #1

Play area for 2 to 5 year-olds

1. Install New Piece
2. Move Tot Swing
3. Install New Fence
4. Install PIP Surface

Project #2

Three-Bay Swing Area

5. Install PIP Surface

SaveKidsCastle.org

Deer Management in Doylestown Township



The Environmental Advisory Committee has been approached by a number of residents recently asking what can be done about the number of deer in the Township. The most common complaint is destruction of our landscaping, but deer create much more serious and complex issues. Although gentle and beautiful, these deer are also a menace on our roads, a quiet pillager of farms and forests and a transmitter of serious illness. What can be done about all these deer?

It's no mystery that we have a lot of White-tailed deer. Deer thrive on 'the edge', with manicured lawns and gardens to browse by day, and close by to forest cover for protection and additional forage. Here, the deer have no natural predators, and are also protected from hunting. With perfect conditions for survival, population of deer has exploded in suburban neighborhoods, and their population density is now much higher than in the time before people managed the landscape. In addition to large numbers, deer are also habituated to the presence of people, so they are unafraid to wander onto our lawns and roads and tend to hang around familiar areas. Even when frightened off, they soon return.

We easily recognize the damage that deer can do to our gardens, flowers and shrubs. Deer are decimating our native wildflowers and forest understory plants and shrubs. Deer also destroy our forests, by browsing saplings and rubbing small trees, causing fatal damage. As a result, our local woodlands have no chance to sustain normal regrowth and a healthy understory. Across Pennsylvania, deer cause hundreds of millions of dollars in damage to the forestry industry. Likewise, deer do significant damage to farms and agriculture [AJ DiNicola 2000; Managing White-tailed Deer in Suburban Environments. A Technical Guide ISBN 1-57753-296-1].

Deerstrikes with cars is another obvious concern. State Farm Insurance projects that Pennsylvanians will have more than 174,000 deer strikes this year; 1 in 52 Pennsylvania drivers will hit an animal of some sort, which is the worst in the nation. Deerstrikes occur most frequently in October and November. [<https://www.lehighvalleylive.com/news/2019/10/pennsylvania-once-again-no-1-in-projected-car-crashes-with-deer-statefarm-says.html>].

Finally, deer are a crucial vector in the transmission of Lyme disease. Lyme disease is a potentially very serious bacterial disease, which in some cases leads to long-term and chronic illness. Although deer do not carry the Lyme bacteria, deer are the favorite host for the adult deer tick, and it is the adult deer tick that transmits Lyme disease to people and pets. It does appear that reducing deer population can reduce the frequency of Lyme disease [<https://entomologytoday.org/2017/09/28/could-reducing-deer-populations-reduce-lyme-disease/>].

What can be done? Managing deer is a very difficult and complicated issue. Deer are a natural part of our local environment; they are beautiful and gentle, and for visitors these may be a distinctive part of our local charm. The “Bucks” is even the mascot of our CB West High School. So we have to balance this natural attraction with the problems noted above. How can we humanely reduce or manage the deer we have? Experts suggest that community input and support is necessary for any kind of coordinated action. A series of recommendations are presented here.

- 1) Don't feed the deer! Feeding deer increases their reproductive success, and also brings deer into closer contact with people, creating more of the problems we want to avoid. It also teaches them not to be afraid of people.
- 2) Choose deer resistant plants and shrubs. Deer will eat almost anything if they are hungry enough, but they clearly have preferences. In particular, deer seem to like daylilies, hostas and Arborvitae. Conversely, they don't prefer plants that are strongly scented, poisonous or prickly. A few suggestions include American Holly, Viburnum, bottle-brush Buckeye, astilbe, Echinacea (cone flower), Lambs Ear, Bee Balm and coreopsis. A qualified landscaper or nursery can make recommendations. Always consider native plants before exotics.
- 3) Deer repellents work. Most deer repellants are odor-based and smell bad to deer. Two well regarded brands are Messina DeerStopper (a spray on liquid) and Deerscram (a powder). They are effective, and quite safe, but they have a cost, and they must be reapplied regularly, following the instructions. It requires continual ongoing effort to be most effective.
- 4) Fences and barriers are another proven method to reduce deer browsing, but also require an active investment. Small trees should be protected with a wire mesh cage at least 1.5 feet across (or plastic tubes for saplings) until they are tall enough to survive browsing. Entire gardens can be fenced, with wire mesh but the fencing must be at least 6 to 8 feet tall. If necessary, an entire yard or field can be fenced. This is a strong permanent solution, but expensive.
- 5) Culling (or harvesting deer) is another option but more difficult to implement. Many residents are uncomfortable with the idea of hunting deer, and hunting is not allowed on township property. In addition, deer easily move between communities, so any culling requires coordinated activity across a region. And deer quickly reproduce, so culling needs to be sustained year after year. In our area this may be a limited option, only suitable for individual hunters who can hunt in season on private property.



In conclusion, managing deer is a complicated issue. There are a number of actions that we can all take as individual to humanely reduce the problems of deer interactions with humans and our property. However, more aggressive deer control will require a long range plan with community support, leading to coordinated and sustained actions across the region. The Doylestown EAC would be a happy to hear your feedback on this issue.

Fire Prevention and Safety

During the fall and winter months extra steps must be taken to keep your home and family safe. The lower temperatures and winter storms can cause problems. Fire is fast and it only takes 30 seconds for a small fire to become a large fire producing large volumes of smoke and toxic gases. **Here are a few things that will help keep you and your family safe.**

- Test all your smoke and carbon monoxide detectors, change batteries, and replace detectors every ten years.
- Make sure your house numbers can be seen from the street so if help is needed emergency personal can locate your home or business.
- If the power goes out stay away from downed lines. If generators are being used keep them away from windows, doors and other openings. Do not run generators in or near the garage.
- Have your furnace, fireplace and chimneys cleaned and inspected for safe operation during the winter months. Keep anything that can melt or burn at least 3 feet away from heating units. Dispose of cooled ashes properly in a noncombustible container.
- Do not use extension cords for portable heaters, keep heaters away from anything that can burn like bedding, walls and furniture.
- Always read manufacturers instructions for the proper use of electrical devices like holiday lights, kitchen appliances, digital devices and household tools.
- Plan and know 2 ways out in case of an emergency. Clear driveway and sidewalks of snow and other debris for easy access to your emergency. Have a common meeting place in a safe location outside. Call 911 to report an emergency.



The things you and your family do now could prevent problems in the future. We all want a safe and enjoyable fall and winter.

Tropical Storm Isaias



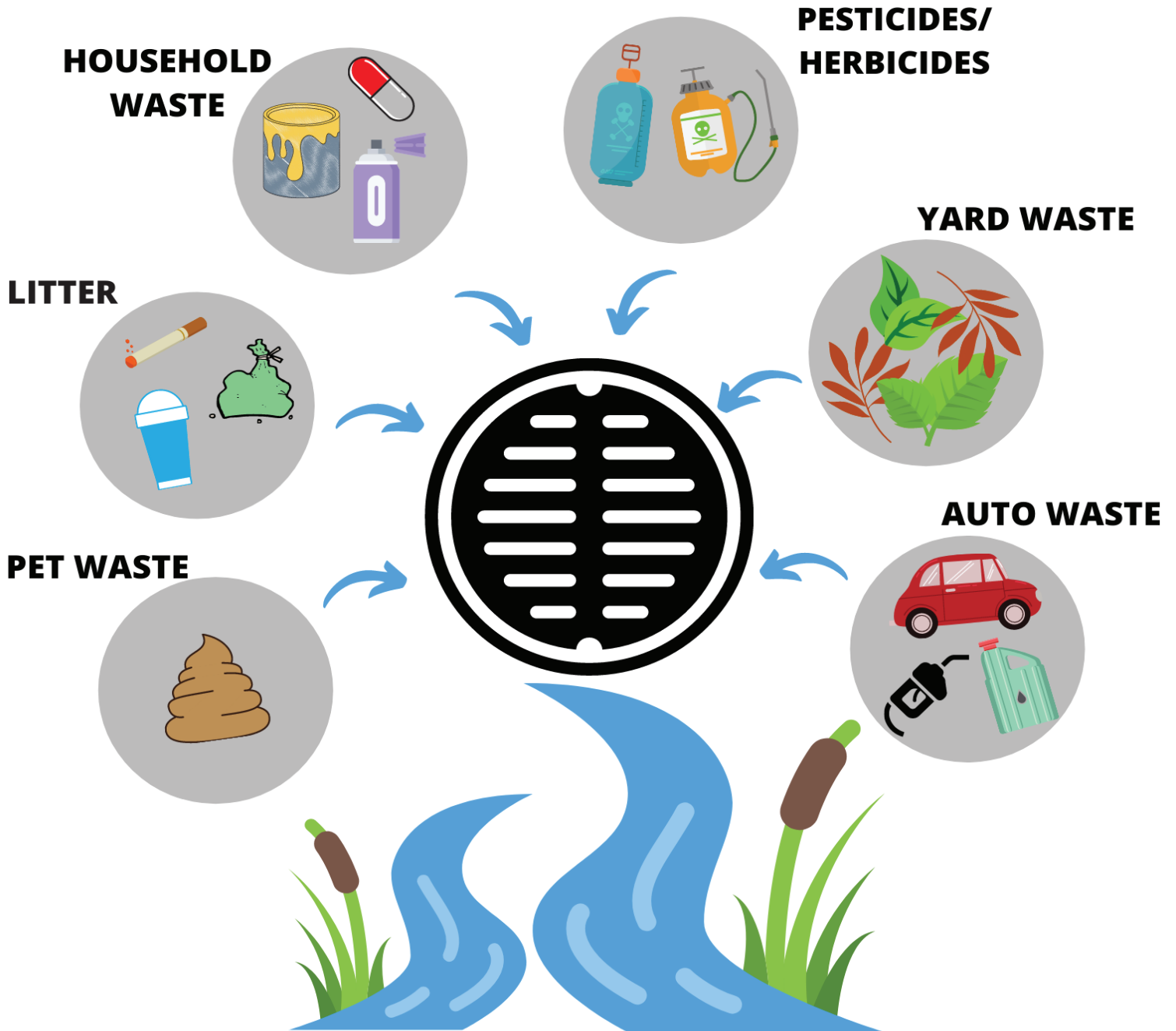
On August 4, 2020 Doylestown Township prepared for Tropical Storm Isaias. The Township experienced something that it's never experienced before, an EF2 Tornado.

Several trees and neighborhoods were impacted with damage to their homes, property and downed trees. The largest single impact was to Doylestown Health's Children's Village. The high winds flipped cars, shattered windows and tore into the childcare center. Township Police, Bucks County Sherriff's Department and Local Fire Companies responded to aid in escorting staff and children from the rubble.

At the August 18, 2020 meeting the Board of Supervisors recognized those responsible for assisting during the storm and thanked our first responders and our Public Works Departments for their efforts in clearing and opening impacted roads. The Township also thanked the Police Departments for supplying food and water to residents in need.

"THE BIG 6"

STORMWATER POLLUTANTS



www.doylestownpa.org/stormwater

A Message from DTMA

Did you know the Doylestown Township Municipal Authority (DTMA) was incorporated in 1989 to serve Doylestown Township's growing demand for a safe, economical water supply? The DTMA five-member Board of Directors are appointed by the elected Doylestown Township Supervisors.

It is important to note DTMA does not receive Doylestown Township taxpayer revenue. The Authority is only funded by its nearly 3,000 customers' water usage and tapping fees. This enables the Authority to focus solely on maintaining and improving their water infrastructure to provide the highest quality drinking water and service at a reasonable cost.

Going for the Grants



The Doylestown Township Municipal Authority recently applied for and received two separate state grants for important infrastructure upgrades. The first grant received is a \$400,000 PA H2O grant provided by the Commonwealth Finance Authority (CFA). These funds will be used to interconnect the DTMA water system with the Delaware Valley University water system. The water main will be extended into New Britain Borough from our existing infrastructure assisting any future development.

The other CFA grant received is under the PA Small Water and Sewer Program. This grant totaled \$157,065 and will aid in rehabilitating the South One Water Tank. Water tanks help provide pressure and storage for high demand use such as firefighting. Water storage tanks are crucial to the water system's operation and must be maintained. The South One tank will be repainted and improvements will be made to ladders, manways, and other safety devices.



Pebble Ridge and Woodridge Main Extensions



DTMA recently kicked off the water main extensions project in the Pebble Ridge and Woodridge neighborhoods in Doylestown Township.

In addition to expanding public water accessibility in this portion of the Township, important infrastructure improvements will be achieved. DTMA will eliminate two dead ends in our system, increase redundancy by looping, and install the groundwork for a future interconnection with a neighboring water utility. DTMA is excited to bring



this much anticipated project to fruition. If anyone is interested in connecting to DTMA public water, please contact Keith Hass, PE, Executive Director of the DTMA.

Projects in Process

Doylestown Township has a \$30k grant from Delaware Valley Regional Planning Commission (DVRPC) to conduct a feasibility study for a trail from the backside of Central Park to the Pooles Corner Park and Ride Lot. We are partnering with Doylestown Borough as the trail will parallel the 202 Parkway. Look for future updates on our website at www.doylestownpa.org and through our Doylestown Community Bike/Hike Committee page on the Township's website.

The Township and Doylestown Borough completed a bike/hike feasibility study late last year for the Turk Road area including Pebble Hill/Green (Cherry and East Roads) Street. The study was funded with a \$25K matching grant from PA DCNR. The Bike/Hike Committee is now looking for appropriate grants to fund the design and construction phases of this project.

Proposed Park Rec/Community Center

The Township just held its kick off meeting with our architect MKSD of Allentown and Ballard/King & Associates to start the feasibility study and design work for this project. The Township, along with our volunteers, have been evaluating this project for the past two years and we're excited that this new aspect of the project is underway. Community/resident input is important and will be sought during the the process. Look for updates about the project on the Township website and through social media.



The Park and Recreation Department is working to update the Township's Park & Recreation Open Space Comprehensive Plan. The appointed volunteer PROS committee, along with local consultants have worked to update the current 2007 Plan. A grant from the PA DCNR was received toward funding of the project. The Committee held several of key person interviews, a sports forum and a community Recreation center public meeting last year. The committee anticipates presenting the updated document to the Board of Supervisors and PA DCNR later this year for final approval. The Plan will serve as a guide for the community over the next ten years. Once adopted the final document will be available on the Township's website.

DOYLESTOWN TOWNSHIP
425 WELLS ROAD DOYLESTOWN, PA 18901
TEL: 215-348-9915 | FAX: 215-348-8729
WWW.DOYLESTOWNPA.ORG
8:30 AM - 4:30 PM (MONDAY-FRIDAY)



BOARD OF SUPERVISORS

Barbara N. Lyons, Chairman
Ryan Manion, Vice Chairman
Jennifer Herring
Dan Wood
Nancy Santacecilia

TOWNSHIP STAFF

Stephanie Mason, Township Manager
Dean Logan, Chief of Police
Charles Zeigler, Police Lieutenant/ Open Records Officer
Dave Tomko, Director of Operations
Ken Wallace, Finance Director
Karen A. Sweeney, Director of Parks & Recreation
Sinclair Salisbury, Director of Code Enforcement
Rick Schea, Fire Marshal
Andrea Susten, Special Projects Coordinator
Kaitlyn Finley, P&R Program Coordinator
Paul Garr, Roads Superintendent
Chris Mason, Parks Superintendent
Jackie Rowand, Open Records Officer
Keith Hass, Executive Director of DTMA
Scott Miele, Water Superintendent

IMPORTANT PHONE NUMBERS

Bucks County Courthouse : 215-348-6000
Bucks County Free Library : 215-348-9081
Bucks County Health Department : 215-345-3318
Bucks County Office of Consumer Protection : 215-348-6060
Bucks County Water & Sewer Authority : 215 343-2538
Central Bucks School District : 267-893-2000
Doylestown Borough : 215-345-4140

BOARDS & COMMISSIONS

Agriculture Security Advisory Council
Bike & Hike Committee
Board of Auditors
Board of Supervisors
Dog Park Advisory Board
Environmental Advisory Council/ Shade Tree Commission
Friends of Kids' Castle
Historical Architectural Review Board
Local Traffic Advisory Committee
Doylestown Municipal Authority
Park & Recreation Board
Planning Commission
Public Water & Sewer Advisory Board
Telecommunications Advisory Board
UCC Board of Appeals
Vacancy Board
Ways & Mweans Committee
Zoning Hearing Board

Would you like to volunteer? Send your letter of interest to info@doylestownpa.org

IMPORTANT PHONE NUMBERS

Doylestown Fire Co. #1 - Non-emergency : 215-348-2656
Doylestown Hospital : 215-345-2200
Doylestown Post Office : 267-880-3918
Doylestown Township : 215-348-9915
PA Recycling Hotline : 800-346-4242
PennDOT : 215-345-6060 , 1-800-FIX-ROAD (pothole)
Police Non-Emergency: 215-348-4200 , 215-348-4201

EISEMAN
WE HAVE YOU COVERED

DON'T WAIT ON A NEW ROOF

EISEMAN CONSTRUCTION is committed to providing top-quality roofing options for homes and businesses. With their ease of installation, clean look, reasonable cost, and low maintenance, asphalt roofs are a popular choice by many. Don't wait any longer for a new roof.

Visit **EISEMAN.BIZ/ROOFING** for more details.

CELEBRATING 50 YEARS OF SERVICE

GEORGE'S TOOL RENTAL

- DRILLS
- SAWS
- JACKS
- HOISTS

Thanks to our loyal customers, George's Tool Rental has been a family-run, small business staple of Bucks and Montgomery counties since 1970. We work hard to provide you with not just the latest equipment, but unparalleled, old-fashioned service to help you get your job done quickly and efficiently. It has been a privilege and an honor serving you for the past fifty years and we look forward to the many years to come.

GTR GEORGE'S TOOL RENTAL, INC.
HATFIELD | DOYLESTOWN | WWW.GTR-RENTS.COM

Get *local help* with your Medicare questions.

I'm Dorota Stefaniak, a Licensed Health Insurance Agent in Doylestown, PA.

When it comes to Medicare, it's important to consider all of your options. What works well for your neighbor may not be the best fit for you. I know the in's and out's of Medicare, and am ready to answer your questions and help you find a plan that fits your needs.

No Cost. No Pressure. Just Help.

Dorota Stefaniak
917-449-6188 TTY 711
MedicareAgent.DS@gmail.com

Mówię po polsku.

FS
FLO SMERCONISH
TEAM

A local name you know and trust.

Clinton Pochlan
REALTOR®
M 215.519.7725
O 215.348.4848
clinton.pochlan@compass.com
flosmerconish.com

Clinton Pochlan is a real estate licensee affiliated with Compass RE. Compass RE is a licensed real estate broker and abides by equal housing opportunity laws. 54 W State St, Doylestown, PA 19901

COMPASS RE



FRANC
ENVIRONMENTAL INC.
Septic & Wastewater Services
Residential • Commercial • Municipal

**FULL SERVICE
SEPTIC SYSTEM
MANAGEMENT**
24 HOUR EMERGENCY SERVICE

CALL TODAY TO SCHEDULE YOUR SERVICE
(215) 443.0650

RESIDENTIAL SERVICES

- PUMPING, LOCATING & REPAIRS
- INSPECTIONS FOR HOME SALES
- NEW SYSTEM DESIGN & INSTALLATION
- PUMP REPAIRS
- DRAIN CLEANING

COMMERCIAL SERVICES

- GREASE TRAP CLEANING
- CAR WASH PIT CLEANING
- HI VAC & JETTING SERVICE
- VIDEO PIPE INSPECTIONS
- WASTEWATER HAULING

The FRANC Difference

• An experienced & highly-trained team • A diverse fleet of trucks & tools
• A commitment to meeting our customers' needs

Visit www.FrancEnviro.com for a coupon — USE CODE DNL

24 HOURS A DAY, 7 DAYS A WEEK • SERVING SOUTHEASTERN PA











**DELAWARE VALLEY
UNIVERSITY**

1896

700 E. Butler Ave., Doylestown, PA 18901 | delval.edu



*Outstanding Experiential
Education Program*



National Society for Experiential Education



Kniese's Plumbing
Doug Kniese
PA004105

3633 Old Easton Rd
Doylestown PA 18902
kniesesplumbing@gmail.com
www.kniesesplumbing.com
(215)348-3113

Where Beautiful Landscapes Begin.






For the last 26 years, Nickett Landscaping has had the pleasure of helping homeowners get the most out of their yards. Whether you are looking for a new backyard patio lined with lush, seasonal plantings, or you are looking to remove standing water in your lawn or driveway, we can help. Call today at 215-345-1385 to start planning for your next design.

Design

- 🌿 New & Renovation
- 🌿 Outdoor Landscape Lighting
- 🌿 Lawn & Driveway Drainage

Construction

- 🌿 Patios, Walls & Walkways
- 🌿 Ponds, Fountains & Waterfalls
- 🌿 Natural Stone Steps

Maintenance

- 🌿 Lawn Renovation
- 🌿 Spring & Fall Clean-ups
- 🌿 Mulching & Weeding
- 🌿 Lawn Mowing
- 🌿 Lawn Applications
- 🌿 Tree & Shrub Spraying & Fertilizing



**NICKETT
LANDSCAPING**
DESIGN • CONSTRUCTION • MAINTENANCE

215-345-1385

We return all calls within 24 hours,
most the same day!

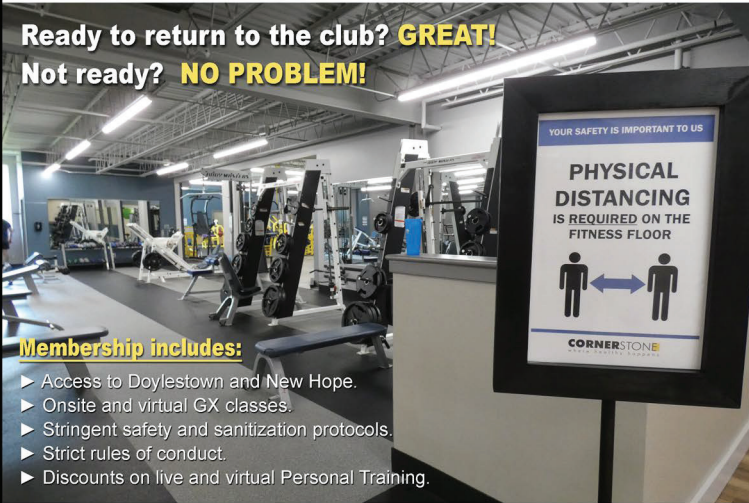
Celebrating 26 Years in Business

Fully Licensed & Insured • PA Certified

CORNERSTONE

where healthy happens

Ready to return to the club? **GREAT!**
Not ready? **NO PROBLEM!**



Membership includes:

- ▶ Access to Doylestown and New Hope.
- ▶ Onsite and virtual GX classes.
- ▶ Stringent safety and sanitization protocols.
- ▶ Strict rules of conduct.
- ▶ Discounts on live and virtual Personal Training.

BE OUR GUEST!

Experience the Cornerstone difference for yourself!
Feel better, move better, energize your life. Sign up for our
10 day FREE VIP Membership - contact us today!

Doylestown - 215.794.3700 | New Hope - 215.862.2200

www.cornerstoneclubs.com



OUR ADS REACH OVER
6,000 HOUSEHOLDS
&
THE DOYLESTOWN COMMUNITY!

FOR MORE INFORMATION
EMAIL
INFO@DOYLESTOWNPA.ORG



200 Years of BUCKS COUNTY ART

New Exhibit Open Now - December 31, 2020



Open 7 Days a Week
Tickets at mercermuseum.org

www.doylestownpa.org | 215-348-9915



Doylestown Township
425 Wells Road
Doylestown, PA 18901



Wherever the road takes you, count on Thompson.
Experience The Thompson Difference. We service **ALL** makes and models.

THOMPSON



DOYLESTOWN | WILLOW GROVE
1800THOMPSON.com | 1-800-THOMPSON