


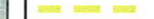




PEACE VALLEY BIKE & HIKE TRAIL

LEGEND:

-  EXISTING TRAIL
-  PROPOSED TRAIL (TOWNSHIP PLANS)
-  PROPOSED TRAIL OPTION 1
-  PROPOSED TRAIL OPTION 2
-  PROPOSED TRAIL BRIDGE
-  EXISTING SIGNAL

January 2011



PEDESTRIAN TRAIL BRIDGE

MICHAEL BAKER JR., INC.
201 GIBRALTAR ROAD, SUITE 120
HORSHAM, PA 19044





1
Iron Hill Rd looking north



3
Covered Bridge Park



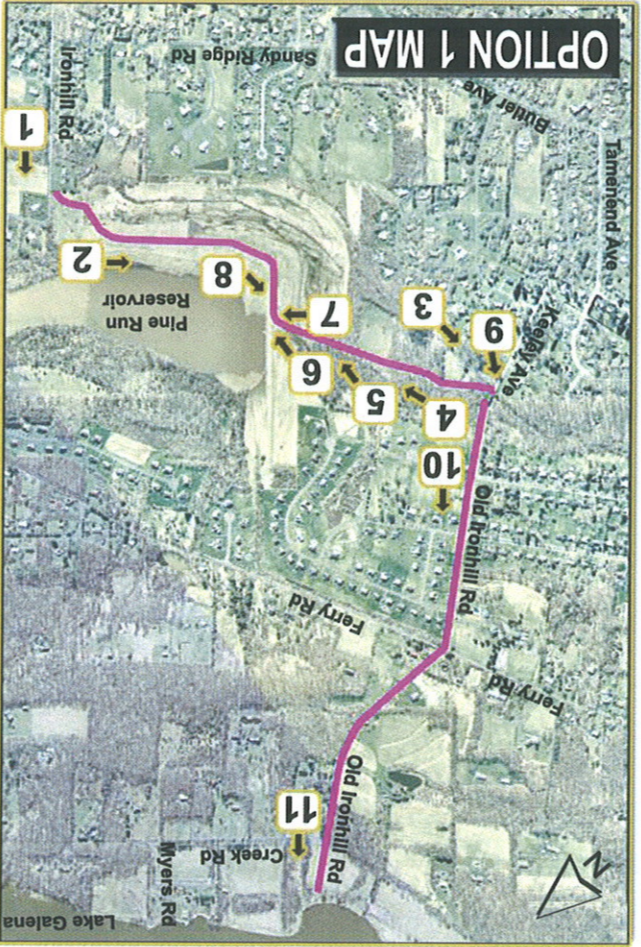
4
Woods Path #2 to Soccer Field



8
Pine Run Reservoir looking west



7
Pine Run Reservoir looking east



9
Covered Bridge on Keeley Ave



10
Existing trail on Old Iron Hill Rd



11
Old Iron Hill Rd looking north



5
Soccer Field looking east



6
Woods Path #2 to Pine Run looking east



2
Pine Run Reservoir looking west

Potential Trail Location

PEACE VALLEY BIKE & HIKE TRAIL

Potential Trail Location

PEACE VALLEY BIKE & HIKE TRAIL



1 South Chapman Rd looking west



2 South Chapman Rd looking West



3 Existing closed road/trail



4 Existing trail at Peace Valley Park looking south



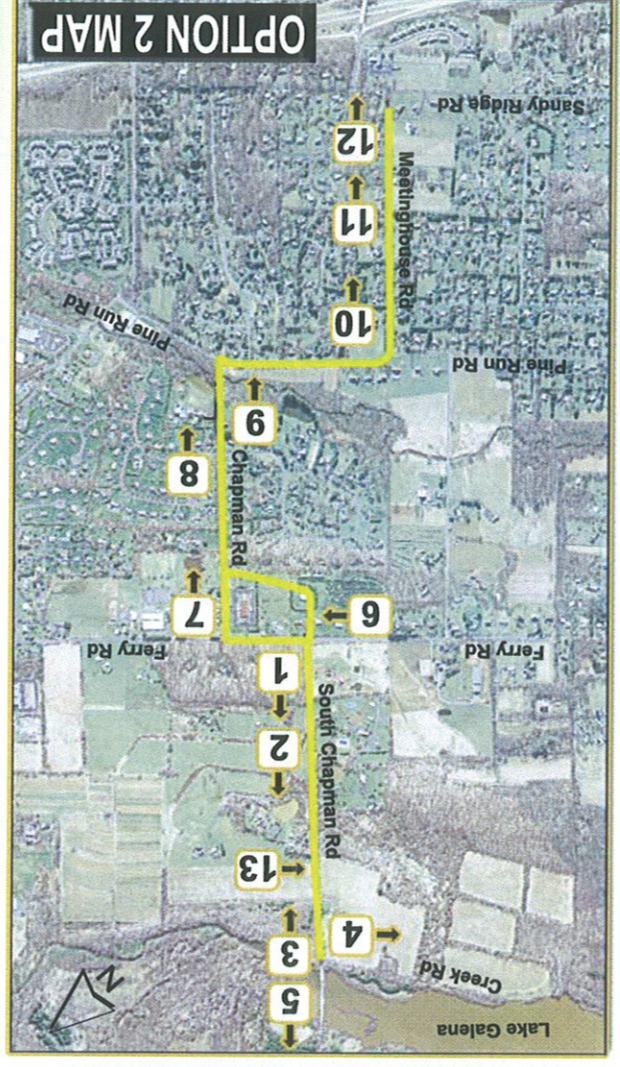
5 Existing bridge at Peace Valley park



6 Ferry Rd looking east



7 Chapman Rd looking south



8 Chapman Rd looking south



9 Bridge over Pine Run on Chapman Rd



10 Meetinghouse Rd looking south



11 Narrow point in Meetinghouse Rd



12 Meetinghouse Rd looking south



13 Existing parking area on South Chapman Rd