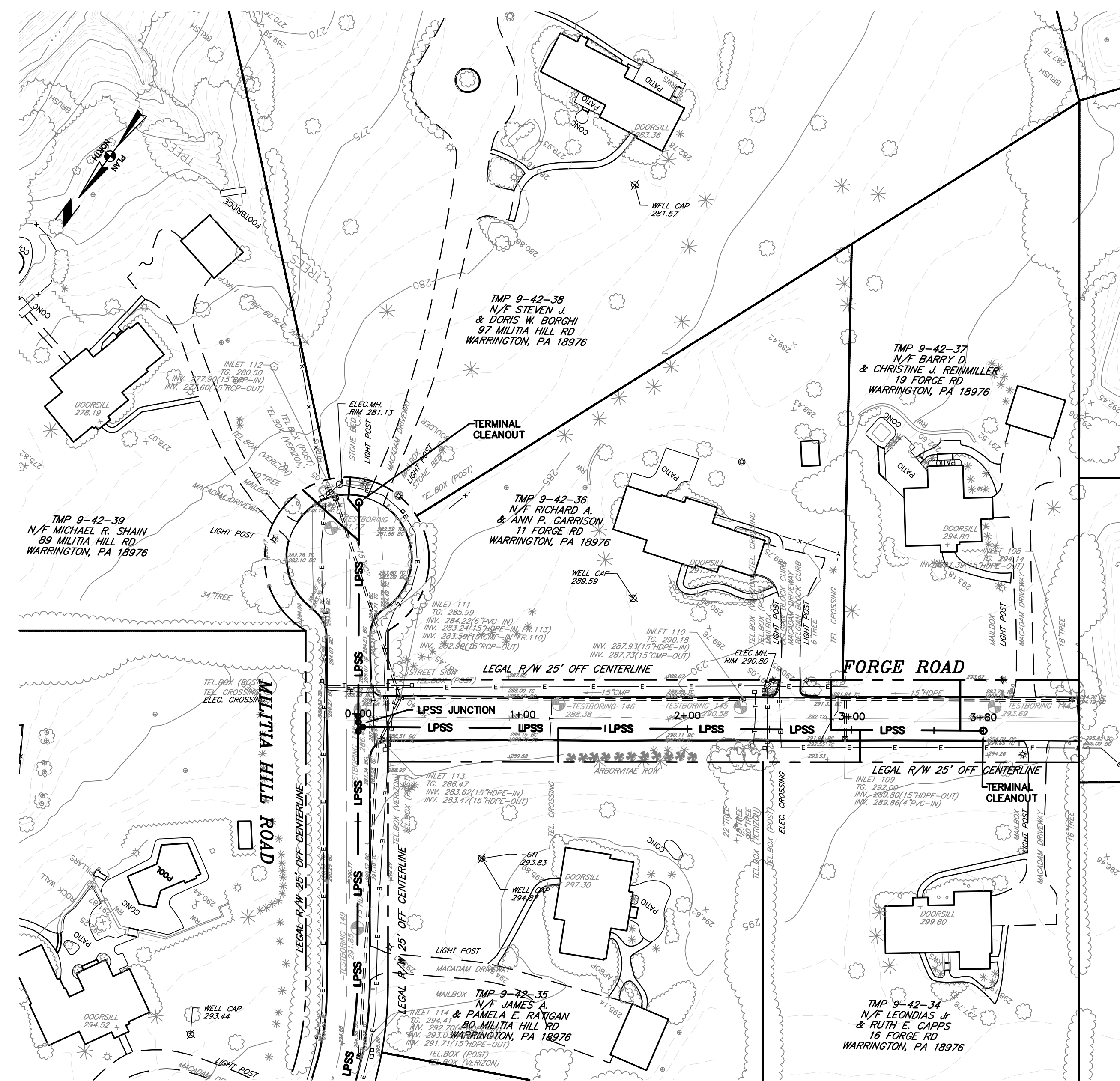


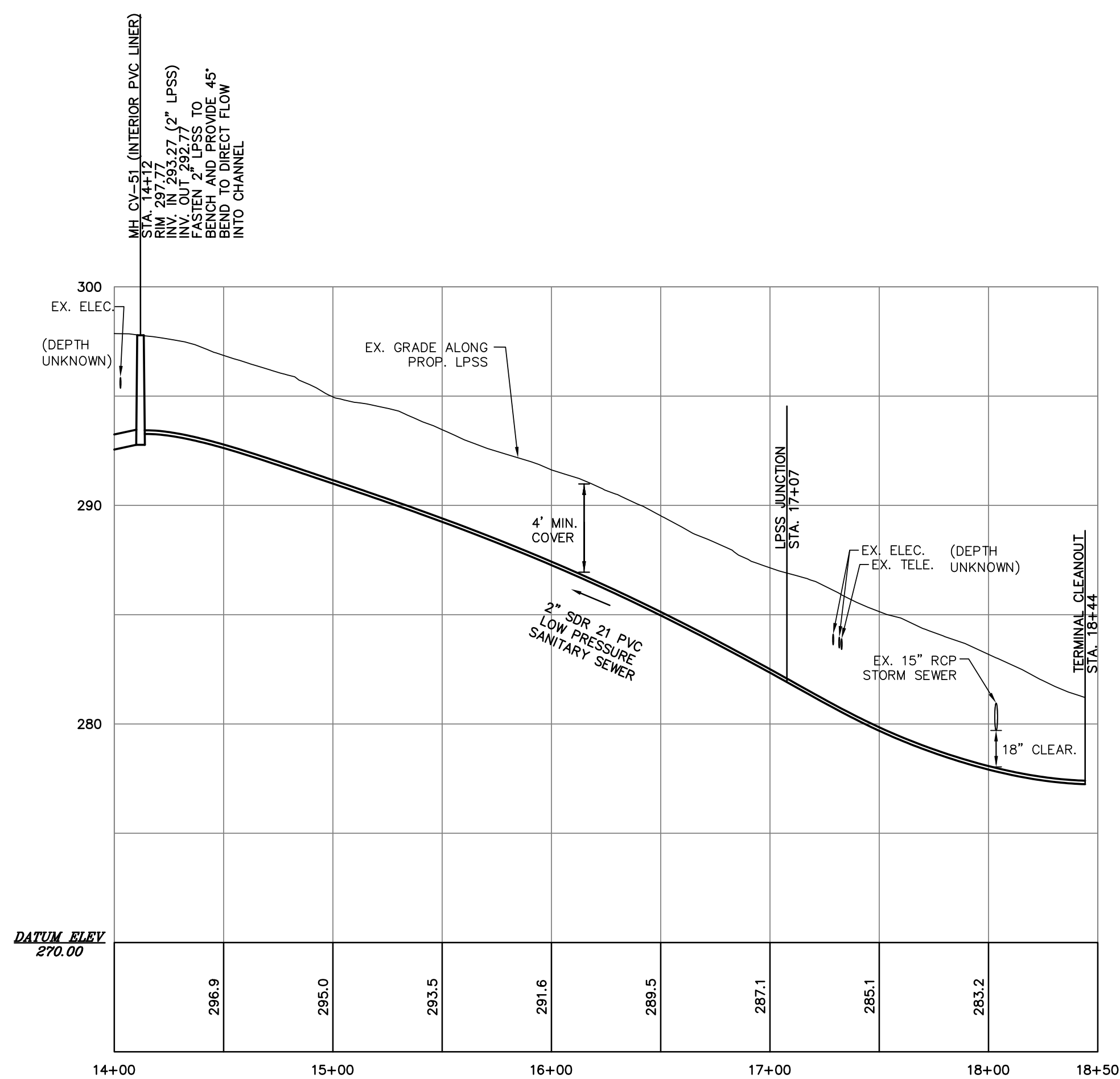
PLAN: MILITIA HILL ROAD

SCALE: 1"=50'



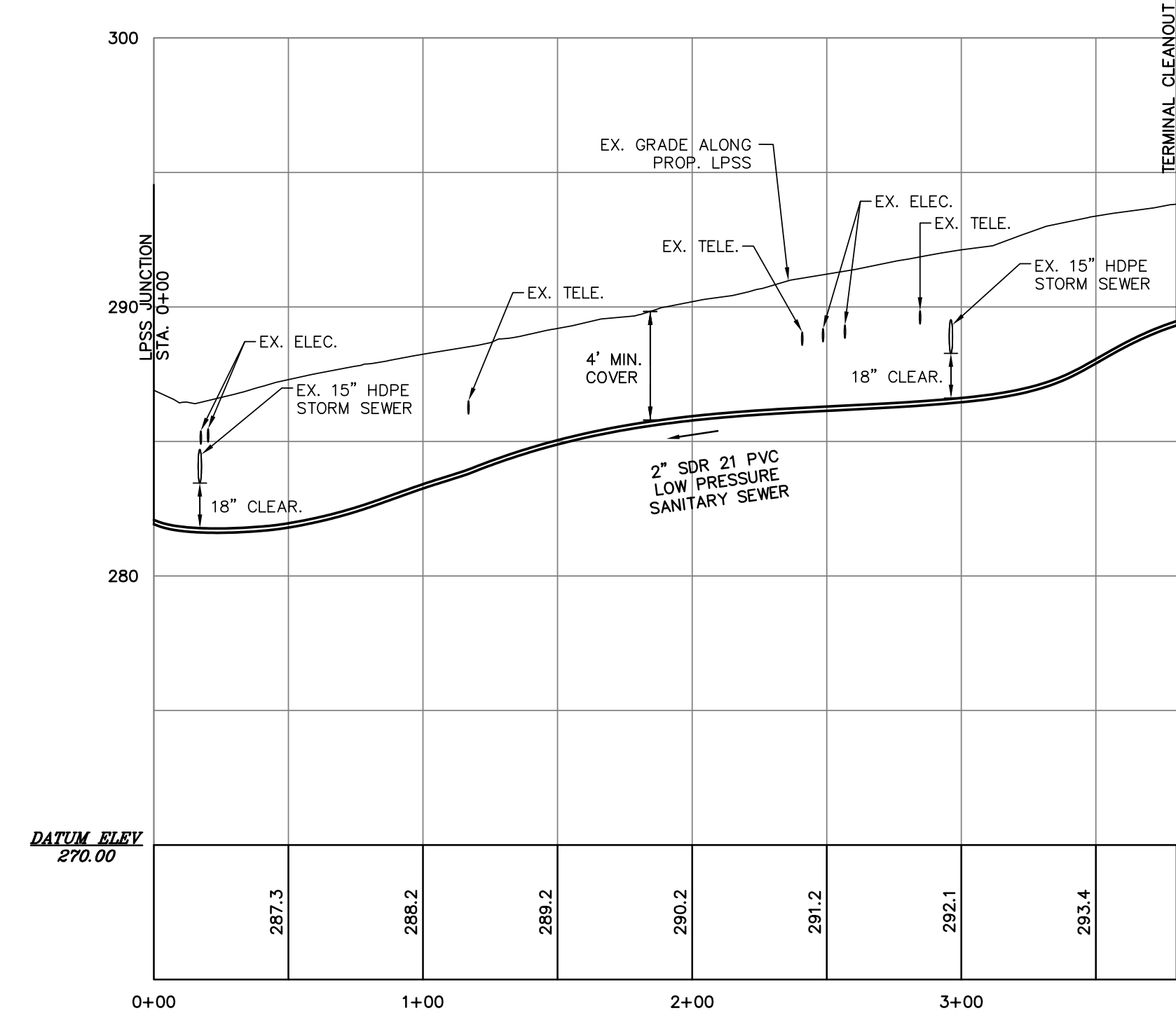
PLAN: FORGE ROAD

SCALE: 1"=50'



PROFILE: MILITIA HILL ROAD (STA. 14+12 TO 18+44)

SCALE: 1"=50'



PROFILE: FORGE ROAD (STA. 0+00 TO 3+80)

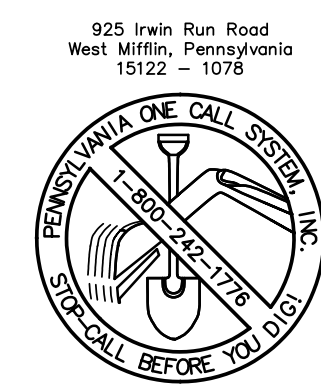
SCALE: 1"=50'

ONLY THOSE PLANS INCORPORATING THE RAISED PROFESSIONAL SEAL SHOULD BE CONSIDERED OFFICIAL AND RELED UPON BY USER. THIS PLAN IS PREPARED SPECIFICALLY FOR THE CLIENT AND PROJECT DESIGNATED HEREON. MODIFICATION, REVISION, DUPLICATION OR USE WITHOUT THE CONSENT OF GILMORE & ASSOCIATES, INC. IS PROHIBITED. © COPYRIGHT 2015 GILMORE & ASSOCIATES, INC. ALL RIGHTS RESERVED.

LOCATIONS OF EXISTING UNDERGROUND UTILITIES/FACILITIES SHOWN HEREON HAVE BEEN DEVELOPED FROM RECORDS, FIELD MARKOUTS BY UTILITY OWNERS, AND/OR ABOVE-GROUND OBSERVATION OF THE SITE. NO EXCAVATIONS WERE PERFORMED IN THE PREPARATION OF THESE DRAWINGS; THEREFORE ALL UTILITIES SHOWN SHOULD BE CONSIDERED APPROXIMATE IN LOCATION, DEPTH, AND SIZE. THE POTENTIAL EXISTS FOR OTHER UNDERGROUND UTILITIES/FACILITIES TO BE PRESENT WHICH ARE NOT SHOWN ON THE DRAWINGS. ONLY THE VISIBLE LOCATIONS OF UNDERGROUND UTILITIES/FACILITIES AT THE TIME OF FIELD SURVEY SHALL BE CONSIDERED TRUE AND ACCURATE. COMPLETENESS OR ACCURACY OF UNDERGROUND UTILITIES/FACILITIES ARE NOT GUARANTEED BY GILMORE & ASSOCIATES, INC.

ALL CONTRACTORS WORKING ON THIS PROJECT SHALL VERIFY LOCATION AND DEPTH OF ALL UNDERGROUND UTILITIES/FACILITIES PRIOR TO START OF WORK AND SHALL COMPLY WITH THE REQUIREMENTS OF P.L. 852, NO. 287 DECEMBER 10, 1974 AS LAST AMENDED ON OCTOBER 9, 2008, PENNSYLVANIA ACT 121. GILMORE & ASSOCIATES, INC. HAS OBTAINED A P.A.-ONE CALL SERIAL NUMBER AS NOTED HEREON FOR DESIGN PURPOSES ONLY.

PENNSYLVANIA ONE CALL SYSTEM, INC.



BEFORE YOU DIG ANYWHERE IN PENNSYLVANIA CALL 1-800-242-1776. NON-MEMBERS MUST BE CONTACTED DIRECTLY. PA LAW REQUIRES THREE WORKING DAYS NOTICE TO UTILITIES BEFORE YOU EXCAVATE, DRILL, BLAST OR DEMOLISH. SEE SHEET NO. 1 FOR SERIAL NUMBERS

OWNER: BUCKS COUNTY WATER & SEWER AUTHORITY
1275 ALMSHOUSE ROAD
WARRINGTON, PA 18976

MUNICIPAL FILE NO.: XX

REGISTERED PROFESSIONAL ENGINEER
ALEXANDER DYKE
No. 054801E
PENNSYLVANIA

2	ISSUED FOR CONSTRUCTION	8-3-18	JM
1	REVISIONS PER DOYLESTOWN TWP LETTERS 1-25-16 AND 3-18-16	6-3-16	BMB
REV.	DESCRIPTION	DATE	BY
TAX MAP PARCEL NO.:	XX	MILITIA HILL ROAD (STA. 14+12 TO 18+44) & FORGE ROAD	
TOTAL AREA:	XX	PEBBLE RIDGE / WOODRIDGE AREA	
TOTAL LOTS:	XX	SANITARY SEWERS	
DATE:	1-15-15	DOYLESTOWN TOWNSHIP, BUCKS COUNTY, PENNSYLVANIA	
SCALE:	AS NOTED	GILMORE & ASSOCIATES, INC.	
ENGINEER		ENGINEERING & CONSULTING SERVICES	
85 EAST BUTLER AVENUE, SUITE 100, NEW BRIGHT, PA 19075-1018 • (610) 365-4320 • www.gilmore-assoc.com		JOB NO.: 2013-05071	
SHEET NO.:		12 OF 32	
DESIGNED BY:	BMB/TJF/HDS/JM	DRAWN BY:	CB/BMB/TJF
CHECKED BY:	SLR		