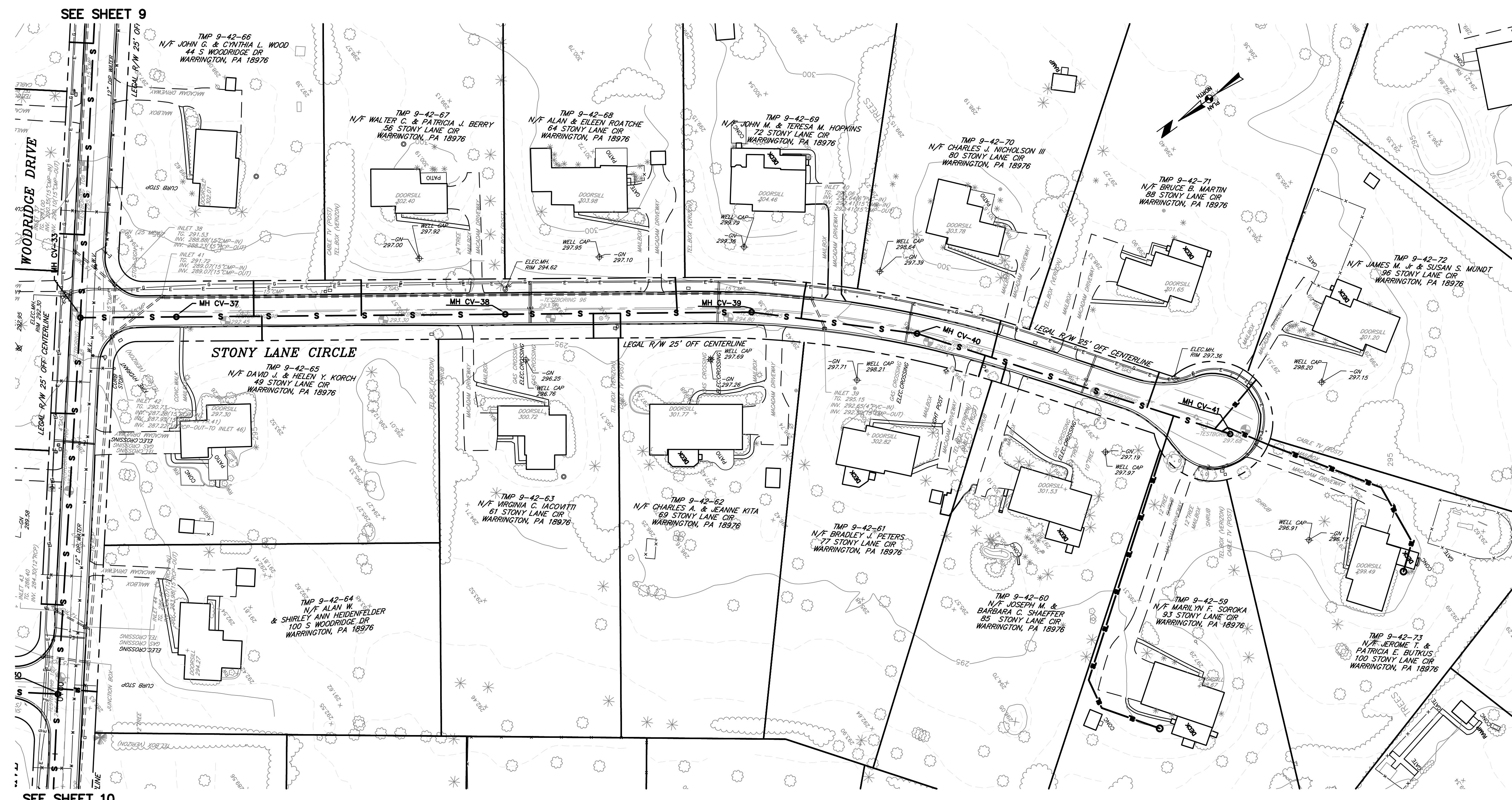
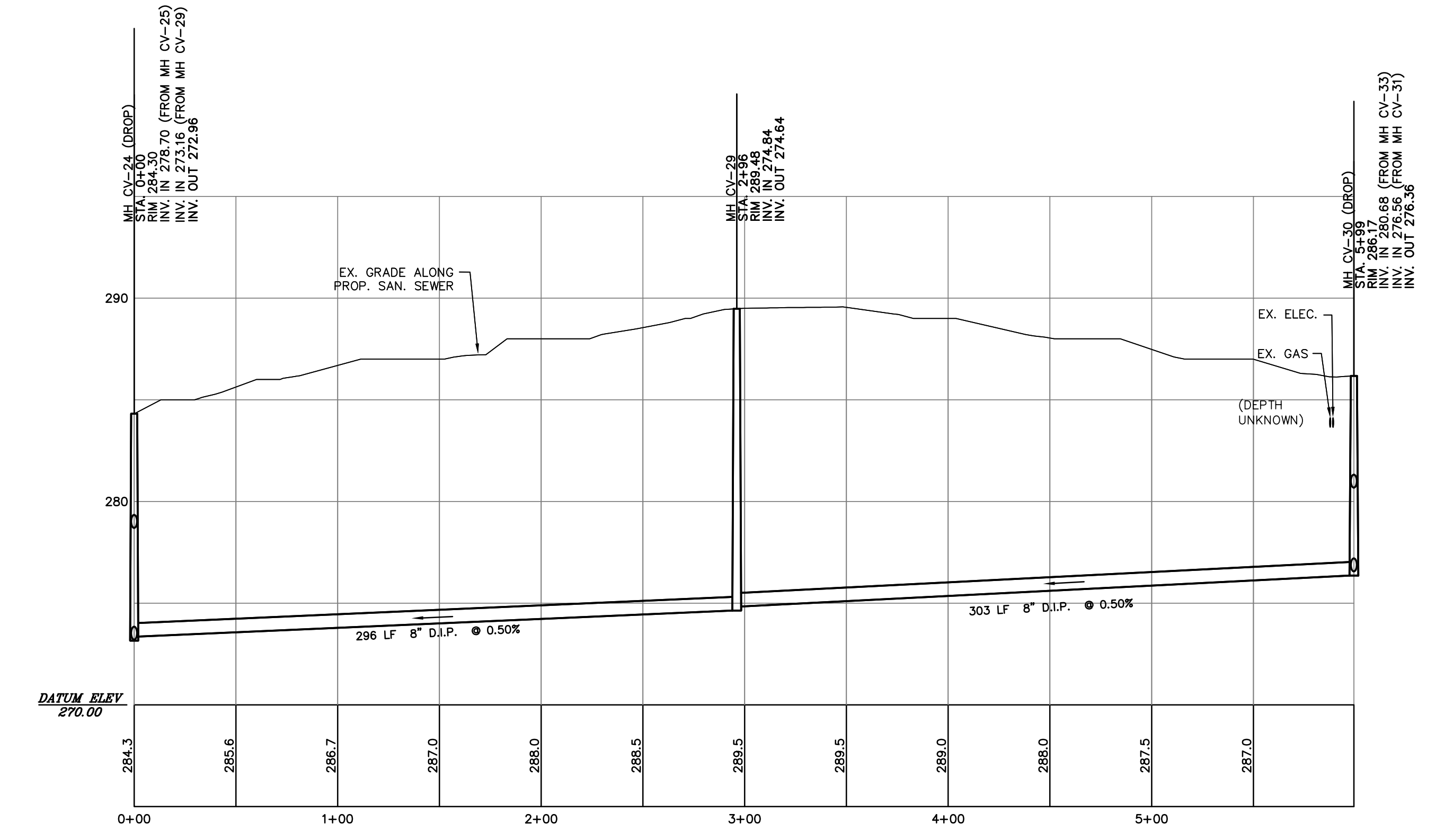


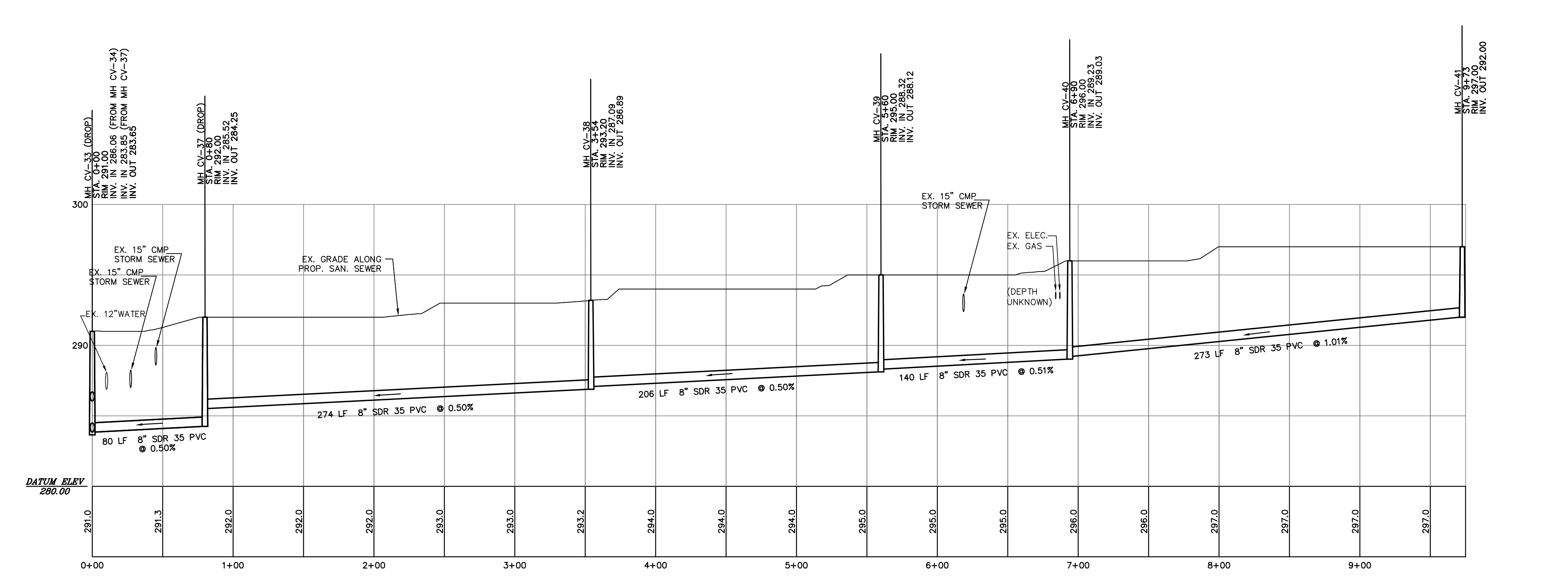
PLAN: STONY LANE  
SCALE: 1"=50'



PLAN: STONY LANE CIRCLE  
SCALE: 1"=50'



PROFILE: STONY LANE (STA. 0+00 TO 5+99)  
SCALE: HORIZ. 1"=50'  
VERT. 1"=5'



PROFILE: STONY LANE CIRCLE (STA. 0+00 TO 9+73)  
SCALE: HORIZ. 1"=50'  
VERT. 1"=5'

ONLY THOSE PLANS INCORPORATING THE RAISED PROFESSIONAL SEAL SHOULD BE CONSIDERED OFFICIAL AND RELIED UPON BY USER. THIS PLAN IS PREPARED SPECIFICALLY FOR THE CLIENT AND PROJECT DESIGNATED HEREON. MODIFICATION, REVISION, DUPLICATION OR USE WITHOUT THE CONSENT OF GILMORE & ASSOCIATES, INC. IS PROHIBITED. © COPYRIGHT 2015 GILMORE & ASSOCIATES, INC. ALL RIGHTS RESERVED.

LOCATIONS OF EXISTING UNDERGROUND UTILITIES/FACILITIES SHOWN HEREON HAVE BEEN DEVELOPED FROM RECORDS, FIELD MARKOUTS BY UTILITY OWNERS, AND/OR ABOVE-GROUND OBSERVATION OF THE SITE. NO EXCAVATIONS WERE PERFORMED IN THE PREPARATION OF THESE DRAWINGS; THEREFORE ALL UTILITIES SHOWN SHOULD BE CONSIDERED APPROXIMATE IN LOCATION, DEPTH, AND SIZE. THE POTENTIAL EXISTS FOR OTHER UNDERGROUND UTILITIES/FACILITIES TO BE PRESENT WHICH ARE NOT SHOWN ON THE DRAWINGS. ONLY THE VISIBLE LOCATIONS OF UNDERGROUND UTILITIES/FACILITIES AT THE TIME OF FIELD SURVEY SHALL BE CONSIDERED TRUE AND ACCURATE. COMPLETENESS OR ACCURACY OF UNDERGROUND UTILITIES/FACILITIES ARE NOT GUARANTEED BY GILMORE & ASSOCIATES INC.

ALL CONTRACTORS WORKING ON THIS PROJECT SHALL VERIFY LOCATION AND DEPTH OF ALL UNDERGROUND UTILITIES/FACILITIES PRIOR TO START OF WORK AND SHALL COMPLY WITH THE REQUIREMENTS OF P.L. 852, NO. 287 DECEMBER 10, 1974 AS LAST AMENDED ON OCTOBER 9, 2008, PENNSYLVANIA ACT 121. GILMORE & ASSOCIATES, INC. HAS OBTAINED A P.A.-ONE CALL SERIAL NUMBER AS NOTED HEREON FOR DESIGN PURPOSES ONLY.

PENNSYLVANIA ONE CALL SYSTEM, INC.  
925 Main Run Road  
West Mifflin, Pennsylvania  
15122 - 1078  
PENNSYLVANIA ONE CALL SYSTEM  
REGISTERED PROFESSIONAL ENGINEER  
EXERCISE BEFORE EXPIRES  
BEFORE YOU DIG ANYWHERE IN PENNSYLVANIA: CALL 1-800-242-1776  
NON-MEMBERS MUST BE CONTACTED DIRECTLY  
PA LAW REQUIRES THREE WORKING DAYS NOTICE TO UTILITIES BEFORE YOU EXCAVATE, DRILL, BLAST OR DEMOLISH  
SEE SHEET NO. 1 FOR SERIAL NUMBERS

OWNER:  
BUCKS COUNTY WATER & SEWER AUTHORITY  
1275 ALMHOUSE ROAD  
WARRINGTON, PA 18976  
MUNICIPAL FILE NO.:  
XX  
REGISTERED PROFESSIONAL ENGINEER  
ALEXANDER DYKE  
NO. 054801E  
PENNSYLVANIA

2	ISSUED FOR CONSTRUCTION	8-3-18	JM
REV.	DESCRIPTION	DATE	BY
TAX MAP PARCEL NO.:	XX		
TOTAL AREA:	XX	TOTAL LOTS:	XX
DATE:	1-15-15	SCALE:	AS NOTED
<b>STONY LANE &amp; STONY LANE CIRCLE</b> <b>PEBBLE RIDGE / WOODRIDGE AREA</b> <b>SANITARY SEWERS</b> DOYLESTOWN TOWNSHIP, BUCKS COUNTY, PENNSYLVANIA <b>GILMORE &amp; ASSOCIATES, INC.</b> ENGINEERING & CONSULTING SERVICES <small>65 EAST BUTLER AVENUE, SUITE 100, NEW BRIGHT, PA 19073-1008 • (215) 345-4200 • www.gilmore-assoc.com</small>			
		JOB NO.: 2013-05071 SHEET NO.: 8 OF 32	
DESIGNED BY:	BMB/TJF/HDS/JM	DRAWN BY:	CB/BMB/TJF
CHECKED BY:	SLR		