



# DOYLESTOWN TOWNSHIP

FALL 2018 Volume 15 Issue III

"Preserving the past, embracing the future"

## IN THIS ISSUE:

- P1. Whats New?
- P2. Summer Recap
- P3. Resident Survey
- P4. Resident Survey Continued
- P5. Septage Management Reminder
- P5. Traffic Advisory Committee Notes
- P6. iRun4Life Recap
- P7. From Rep. Marguerite Quinn
- P8. Recycling Information
- P9. PA Invasive Species
- P10. Merchant Marketplace

## WHAT'S NEW?

*Time Capsule Dedication Ceremony*

**DECEMBER 2018**

Seeking unique contributions from organizations and individuals for Doylestown Township's **Bicentennial Time Capsule.**

The last day to contribute is October 15<sup>th</sup>, 2018.

For more information visit our website.

[www.doylestownpa.org/bicentennialcelebration](http://www.doylestownpa.org/bicentennialcelebration)

## Contact Us

425 Wells Road  
Doylestown, PA 18901

Phone: (215) 348-9915

Fax: (215) 348-8729

Monday-Friday  
8:30am -4:30pm

[info@doylestownpa.org](mailto:info@doylestownpa.org)

[www.doylestownpa.org](http://www.doylestownpa.org)  
[www.doylestownrec.com](http://www.doylestownrec.com)

## WE WANT YOUR FEEDBACK!

Doylestown Township is committed to improving communications. We are conducting this survey to help us determine how best to fill your needs.

We appreciate your time and thoughts!

Completed surveys can be mailed or dropped off at the Township administration building. You can also take the survey online! Please see pages 4 and 5 to complete the survey and help to make positive changes here in your community.

Thank you, Doylestown Board of Supervisors.

# A Look Back at Summer 2018

## APA of PA reconginizes Central Park



From left to right, Barbara N. Lyons, Chairman, Board of Supervisors, Joe Salvati, Chairman, Friend's of Kids's Castle, David Schwartz, APA-PA Representative and Jeannine Mitchell, Chairman, Environmental Advisory Council.

**Harrisburg, PA** -- The Pennsylvania Chapter of the American Planning Association (APA-PA), through its Great Places in PA Program, annually designates Great Places. For 2018, the Great Places categories were Great Greenways/Trails and Great Public Spaces. Great Places have a sustainable vision for the future and serve as a model for other communities.

APA-PA is proud to announce the designation of Central Park, in Doylestown Township, Bucks County, as a 2018 Great Public Space. This 140-acre Park, which is the focal point of the Township, also includes connections to neighboring municipalities. Residents and visitors gather at the Park for recreation, social interaction, and community events. Kids Castle, a majestic playground inspired by the castles of Henry Chapman Mercer and enclosed by a fence lined with one of a kind donated artwork, is one of the highlights. Central Park is also home to an amphitheater, outdoor fitness equipment, picnic pavilions, sport fields and courts, trails, and environmental education areas (wetlands, native plant garden, natural habitats). Among the trails is a sensory trail dedicated to developing sensory experiences for children with special needs. The Park, which attracts individuals and families from all over the world, is truly a place for community gathering, inspiration, and making countless memories.

## Public Works 2018 Road Paving Program Updates



As the summer months wind down and the Township Road Department prepares for fall and winter months, the following is a recap of the roads paved in 2018.

Doylestown Township contracted with James D. Morrissey, Inc. to resurface approximately 3.8 miles of Township owned roads, those roads included:

- Bunker Hollow Road
- Burke Circle
- Caddy Drive
- Cedarcrest Court
- Country Club Drive
- Greenview Lane
- Hogan Court
- Leapson Lane
- Nicklaus Drive
- Par Drive
- Player Lane
- Putters Place
- South Shady Retreat Road
- Upper State Road.

The following are roads were repaved by PennDOT in 2018:

- Ferry Road
- Pine Run Road
- Lower State Road

For information and updates on future Township Road Department projects, please visit [www.doylesotwnpa.org](http://www.doylesotwnpa.org) and browse to the Road section under the Departments and Services tab.

## Pension Advisory Committee

In an effort to better address our uniform and non-uniform employees the Board of Supervisors revised the ordinance and reconstituted the pension committee. The previous committee had been made up of the Supervisors and a representative from the uniform employees and non-uniform employees. With the amended ordinance in place, the pension committee now consists of Chairman, Sinclair Salisbury, non-uniformed representative and Vice Chairman Ed Denton. Rounding out the committee are voting members Joe Delikat, Greg Shuster, Nancy Wasch, Colleen Mullin and uniformed representative Officer Timothy Riehl. Supporting the committee are three non-voting members, Supervisor Ken Snyder, Township manager Stephanie Mason and Ken Wallace, Finance Director.

The newly designed committee is the result of the study completed by a sub-committee of our Ways and Means committee that spent a year studying the Township's existing defined benefit pension plans. The goal of the committee is to make sure the plans are appropriately funded.

The committee meets the second Monday of the month at 4:30 PM at the Township Administration building.

For more information on the Pension Advisory Committee or any other board or committee please visit our Boards and Commissions page on the Township website.

<http://www.doylestownpa.org/government/boards-and-commissions/>



Hello Residents!

Doylestown Township is committed to improving communications. We are conducting this survey to help us determine how best to fill your needs. We appreciate your time and thoughts!

Thank you,  
Doylestown Board of Supervisors.

*You can also take the survey on-line at...*  
<https://www.surveymonkey.com/r/Dtwp-residentsurvey>

NAME \_\_\_\_\_ E-MAIL \_\_\_\_\_

ADDRESS \_\_\_\_\_

1.) Please indicate how strongly you agree or disagree with the following statements.

	Strongly Agree	Agree	Neutral	Disagree	Strongly Disagree
You receive <b>too</b> much information from Doylestown Township.					
You receive too <b>little</b> information from Doylestown Township.					
You receive the <b>right</b> amount of information from Doylestown Township.					
The Doylestown Township Newsletter is informative.					
You take action because of the information you receive from the Doylestown Township Newsletter.					

2.) How often do you visit the Doylestown Township website?

- A. \_\_\_\_ More than once a week
- B. \_\_\_\_ About once a week
- C. \_\_\_\_ More than once a month
- D. \_\_\_\_ Less than once a week
- E. \_\_\_\_ Never

4.) How often do you watch the Doylestown Township Government Access Channel

(DTV- channel 22 on Comcast / channel 31 on Verizon)?

- A. \_\_\_\_ More than once a week
- B. \_\_\_\_ About once a week
- C. \_\_\_\_ More than once a month
- D. \_\_\_\_ Less than once a month
- E. \_\_\_\_ Never

3.) Are you a member of the Doylestown Township Google Group?

- A. \_\_\_\_ Yes
- B. \_\_\_\_ No



PLEASE TURN OVER TO COMPLETE

5.) When you are watching television programming, do you prefer to see it on...

- A.  Wide Screen
- B.  High Definition

6.) In general, how do you currently receive Township news and information? (Check all that apply)

- A.  Email
- B.  Doylestown Township Google Group
- C.  Facebook
- D.  Printed newspaper, i.e. The Intelligencer, Bucks County Herald, The Reporter, Patch.
- E.  Online newspaper, i.e. The Intelligencer, Bucks County Herald, The Reporter, Patch.
- F.  Township Website
- G.  Twitter
- H.  Posters/local kiosks
- I.  Township Newsletter
- J.  Parks & Recreation program guide
- K.  Crime Watch
- L.  Central Bucks School District e-flyer folder
- M.  CB Cares Backpack Newsflash
- N.  Instagram

7.) In the case of emergencies, where do you go to receive the latest information? (Check all that apply)

- A.  Email (other than email from Doylestown Township Google Group).
- B.  Doylestown Township Google Group
- C.  Facebook
- D.  Website
- E.  Twitter
- F.  Crime Watch
- G.  PECO
- H.  Ready Bucks
- I.  Online Newsletter, i.e. The Intelligencer, Bucks County Herald, The Reporter, Patch.

9.) How do you prefer to receive Township information? (check all that apply)

- A.  Email
- B.  Twitter
- C.  Facebook
- D.  Text messages.
- E.  Website
- F.  Through the mail.
- G.  Doylestown Township Google Group

10.) Would you provide your cell phone number to receive emergency updates via text messaging?

- A.  Yes
- B.  No

11.) Please indicate your sex:

- A.  Male
- B.  Female

12.) Please select your age category:

- A.  Under 18 years of age
- B.  Between 18 and 30 years of age
- C.  Between 31 and 40 years of age
- D.  Between 41 and 50 years of age
- E.  Between 51 and 60 years of age
- F.  Over 61 years of age

*This survey can also be completed online at...*  
<https://www.surveymonkey.com/r/Dtwp-residentsurvey>



After you complete this survey  
tear out this page and mail it back  
to us or drop it off to

**425 Wells Road,  
Doylestown, PA 18901**



# Septage Management

**REMINDER**

Ordinance No. 299 requires all Doylestown Township residents with on-lot sewage disposal systems to have their systems pumped and inspected by an approved pumper/hauler/installer every three years.

The ordinance was adopted to assist homeowners to ensure the successful present and future operation of existing OLDS. This program will help protect your health and safety, as well as the wellbeing of your neighbors.

Residents who have septic systems must also have their well water tested for coliform (bacteria E-coli) during the same calendar years as they pump.

## When should you schedule your next pump/inspection?

Cycle 1: 2019, 2022, 2025...

Cycle 2: 2020, 2023, 2026

Cycle 3: 2021, 2024, 2027

## What cycle are you in?

View the Septage Management Cycle Map at

<http://www.doylestownpa.org/information-3/septic-management/>

If you have any questions call 215-348-9915 and ask to speak with our Septage Management Coordinator.

## Helpful Phone Numbers

Bucks County Conference & Visitor's Bureau:  
215-639-0300

Bucks County Court House  
215-348-6000

Bucks County Free Library  
215-348-9081

Bucks County Health Department  
215-348-3318

Bucks County Water & Sewer Authority  
215-348-2538

Central Bucks School District  
267-893-2000

Doylestown Borough  
215-345-4140

Doylestown Fire Company #1  
Non-Emergency: 215-348-2656

Doylestown Hospital  
215-345-2200

Doylestown Post Office  
267-880-3918

PA Hotline (for State Roads)  
888-349-7623

PennDOT  
215-345-6060

Police Non-Emergency  
215-348-4201  
215-348-4200

Police Emergency  
911

## A Note From The Traffic Advisory Committee

The Doylestown Township Traffic Safety Committee always encourages citizens' driving safety actions include focusing on driving while driving defensively, implement a safe driving plan, and always practice safety. You can accomplish these tasks for dedicating yourself to the following ideas.

Keep 100% of your attention on driving at all times – no multi-tasking. Don't use your phone or any other electronic device while driving.

Your eyes cannot focus on your cell phone and the roadway simultaneously. Slow down. Speeding gives you less time to react and increases the severity of an accident.

Newer illumination devices on our vehicles for roadways make us feel more secure and persuade us to speed. Ignore the notion to speed.

Be aware of what other drivers around you are doing and expect the unexpected. Assume other motorists will do something crazy such as crossing the highway median, and always be prepared to avoid it.

Keep a two-second cushion between you and the car in front of you. Make that four seconds if the weather is bad or you are driving on an interstate. Keeping this safety gap will allow you to avoid a collision in the event vehicles or items appear abruptly in front of you.

# Thank You iRun4Life Jamison Elementary School Group

By Joe Salvati, Chairman Friends of Kids Castle



We are overwhelmed by the dedication and generosity of the children from the iRun4Life Jamison Elementary School group, who raised \$1,937 for the ongoing improvements needed at Kids Castle.

Lead by Jan Alvarez, Director of this group of kids – 187 children organized themselves into fourteen teams to participate in this fun-fundraising event.

An obstacle course was created with bales of hay to climb over, swimming noodles gently set up to crawl under, hula hoops arranged on the ground like a pro-football tire run challenge, and so on.

The children also elected to have themselves safely dusted with a bit of colored powder (popularized by Color-Run events) as they approached each obstacle station.

The course itself spanned a great distance around the entire Jamison Elementary School complex.

The children kept themselves well hydrated during this hot day and decided to traverse the obstacle course twice in order to raise more money for Kids Castle – and they did!

I am also very happy to report that all fourteen teams reached their own personal goals and chose to have Kids Castle bricks engraved in each team's name!

In the spirit of true teamwork, these children worked together side-by-side to achieve this goal. And together their engraved bricks are now placed side-by-side at Kids Castle to commemorate this moment in time forever.

The goal achieved through ongoing donations like this, is a new play environment at Kids Castle

that welcomes everyone including children with sensory processing disorders, autism, and people of all ages using wheelchairs and other mobility devices.

And now we only need \$30,000 more to purchase the very last new play piece needed to complete this goal.

For a limited time only, every donation made directly at [HelpKidsCastleNow.org](http://HelpKidsCastleNow.org) will be Matched dollar-for-dollar up to Five-Thousand Dollars. Donate a dollar and Kids Castle gets Two, donate more and Kids Castle gets even More.

But the donation must be made at [HelpKidsCastleNow.org](http://HelpKidsCastleNow.org) for it to be matched. Please consider a donation in any amount you can afford.

Thanks to the ongoing financial support of caring people like you, even more children will be welcomed to play at Kids Castle through your donation.

Our sincere thanks to each of you!

**1989**

Township leases 1.3 acres in Edison Village to create Bridge Point Park.

**1993**

The Doylestown Township Mural is dedicated in a ceremony at the Township Building.

**1995**

Dedication of Central Park.

**1997**

Dedication of Kids Castle.

**2000**

Doylestown Township celebrates First Night.

**2006**

Doylestown Township community helps out hurricane Katrina victims.

# Path for Redistricting Legislation Takes Many Turns

By Rep. Marguerite Quinn

As you may know, the status of House Bill 722 -- legislation that seeks to reform the state's redistricting process and ensure fair legislative districts at both the state and federal levels -- has been on quite the path. I am a co-sponsor of the original draft of the legislation, which seeks to implement a citizens' commission to redraw the lines after the U.S. Census every 10 years. This would apply to districts for Congress, state Senate and State House.

During the spring session, the original proposal was altered dramatically in the House State Government Committee. Additionally, the Senate's own version, Senate Bill 22, was amended in that chamber to include provisions to establish -- for the first time -- judicial district boundaries.

Now that Senate Bill 22 passed the Senate and was referred to a House committee, 700-plus amendments have been attached to the bill.

Some of those are very well intentioned to improve the overall bill, while others are designed to stop the bill.

If a bulk of those amendments can be withdrawn, a vote can be called up. If that happens, I'm looking forward to a responsible bill being debated in the House in a couple weeks.

Please note that such a monumental reform must follow a very strict set of procedures to ensure that the letter of the law is adhered. As such, identical language must pass both chambers in two consecutive sessions before going to the voters for approval. We can pass legislation this fall and again in the new 2019-20 session, which begins Jan. 1, 2019.

Of course, I would like to vote on it as quickly as possible so that the voters can have the ultimate decision, as early as fall 2019.

## Government Access Channel

Comcast Channel 22 - Verizon Channel 31

## Social Media

Stay informed of Township news, Parks and Recreation events, road closures, winter weather and police emergencies.

## To join our Google Group:

Go to [www.doylestownpa.org](http://www.doylestownpa.org) and left click [Click Here] to "Subscribe to Doylestown News" at the bottom of the page.

## Follow us on Twitter @

### **DoylestownTWP:**

Go to <https://twitter.com/doylestowntpw> and click "[Follow]" in the top right corner.

## Like us on Facebook:

Go to [www.facebook.com/doylestowntpw](http://www.facebook.com/doylestowntpw) and then click [Like] in the left sidebar.

## Follow us on Instagram:

Go to <https://www.instagram.com/doylestowntpw/> and view our photos

## View our Youtube channel:

This can be accessed via the "videos" button on the homepage of our website, [www.doylestownpa.org](http://www.doylestownpa.org)



**2008**

Community and Veterans Service Memorial Dedication.

**2011**

Township creates Adopt-A-Road Program.

**2014**

Township celebrates its 20<sup>th</sup> year of free summer concerts.

**2015**

Dedication of the Coveant Bank Amphitheater.

**2017**

Township breaks ground for new Township building.

**2018**

Township celebrates its Bicentennial with various events and dedications.



# Recycling

Doylestown Township residents have the option to choose a trash hauler of their preference. All residents and businesses must choose from a municipal waste collector who is legally operating within the township, and collections shall occur at least once each week. Per Doylestown Township Code, all residents and businesses must recycle and must provide sufficient approved containers for receiving and holding solid waste. When placed at the curb for collection, they shall be easily accessible to the collection vehicle.

## Recyclable Materials:

- Aluminum
- Newsprint
- Plastics
- Steel containers
- Clear and colored glass

## Prohibitions:

- Volatile liquids, explosives or radioactive material
- Hazardous waste

**Plastic bags are NOT to be recycled.**

**Please contact your hauler for more information on their regulations of plastic separation.**

**Please view the Township's website AND your haulers website for more information.**

# Furlong Area Water Project

*By Keith Hass, DTMA Executive Director*



In the summer of 2018, the Doylestown Township Municipal Authority, Doylestown Township, and Buckingham Township completed the Furlong Area Water System Project.

Water mains installed along Rogers Road, York Road, Edison Furlong Road, and in Buckingham Township provided access to safe drinking water to approximately 40 residential and commercial properties whose wells contained volatile organic contamination (VOC) contamination. The Pennsylvania Department of Environmental Protection partially funded the project with a grant in the amount of \$688,000. DTMA thanks the property owners for their patience during the construction.

For more information, visit <http://www.doylestownpa.org/dtma/>

## Board of Supervisors

Barbara N. Lyons, Chairman  
Richard F. Colello, Vice Chariman  
Ryan Manion  
Ken Synder  
Jennifer Herring

## Township Staff

**Township Manager**  
Stephanie Mason

**Chief of Police**  
Dean Logan

**Director of Operations**  
Dave Tomko

**Director of Parks & Recreation**  
Karen A. Sweeney

**Finance Director**  
Ken Wallace

**Director of Code Enforcement**  
Sinclair Salisbury

**Fire Marshal**  
Rick Shea

**P&R Program Coordinator**  
Kaitlyn Finley

**Special Projects Coordinator**  
Andrea Susten

**Roads Superintendent**  
Paul Garr

**Parks Superintendent**  
Butch Froehlich

**Open Records Office**  
Jackie Rowand

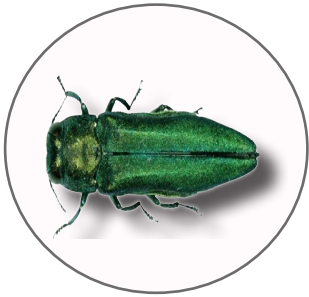
**Executive Director of DTMA**  
Keith Hass

**Water Superintendent**  
Scott Miele



# Invasive Species Affecting Pennsylvania

## Emerald Ash Borer (*Agrilus planipennis*)



- Wood-boring beetles that are bright metallic green in color and bullet shaped.
- Adults feed on ash foliage for several days and then begin to mate. This begins the process of the EAB infestation.
- Control tactics are limited with tree removal, chemical treatment using insecticides containing active ingredients to control EAB.
- The Pennsylvania Department of Agriculture has issued a quarantine restricting the movement of ash nursery stock, green lumber, and firewood of all types.

## Spotted Laternfly (*Lycorma delicatula*)



- Invasive planthopper native to China, India and Vietnam.
- Attacks grapes, apples, stone fruits, and the tree of heaven.
- Egg masses will be laid on medium to large trees, on trunk, branches, and limb bases.
- Trees, such as tree of heaven and willow, will develop weeping wounds. The wounds leave a greyish or black trail along the trunk. Sap will attract other insects to feed.

For more information on invasive species in Pennsylvania visit sites such as the Pennsylvania Department of Agriculture, USDA Natural Resources Conservation Service, Pennsylvania Department of Conservation and Natural Resources and the Penn State Extension for a wide variety of online resources.



## Environmental Advisory Council Fall Speaker Series



**Featured Speaker**  
**Larry Weaner**

**Monday**  
**October 8, 2018**

**6:30 PM**

Delaware Valley University  
Life Sciences Building

700 E. Butler Avenue  
Doylestown, PA 18901

“Discover how to use your region’s native flora to achieve landscapes that are diverse, beautiful, and low-maintenance.

Through a series of case studies, this presentation explores the dynamic ecological processes that occur in our native woodlands, shrub lands, and meadows, and illustrates their direct application in a variety of residential landscapes”.

### Board and Commissions

Agricultural Security Advisory Council  
Bicentennial Committee  
Bike and Hike Committee  
UCC Board of Appeals  
Board of Auditors  
Central Bucks Senior Task Force  
Dog Park Advisory Board  
Environmental Advisory Council/  
Shade Tree Commission  
Friends of Kids Castle  
Historical Architectural Review Board  
Municipal Authority (DTMA)  
Park & Recreation Board  
Planning Commission  
Pension Advisory Committee  
Public Water & Sewer Advisory Board  
Traffic Advisory Committee  
Ways & Means Committee  
Vacancy Board  
Zoning Hearing Board

Interested in volunteering?  
Send your letter of interest to  
[info@doylestownpa.org](mailto:info@doylestownpa.org)

MERCHANT MARKETPLACE

Be a Hero

DOUBLE YOUR DONATION

Your Donation Matched Dollar for Dollar up to \$5,000

Your Donation \$50

Donation Matched \$50

Total Donation = \$100



Please Donate Now

HelpKidsCastleNow.org

Made Possible by the Hubbard Matching Donation Program
All donations must be made at HelpKidsCastleNow.org to be matched

Advertisement for Doylestown Central Bucks Family YMCA. Features a photo of a child in a pool and a man smiling. Text includes 'All in for family fun!', 'There's no better time to join!', a list of amenities, and contact information for the YMCA.

Imagine your AD here.
Our ads reach over 6,000 households and are very affordable!
For more information regarding ad rates and deadlines please email: info@doylestownpa.org



# MERCHANT MARKETPLACE

Play for Children of All Abilities



You Can Make It Happen!

Donate at **SaveKidsCastle.org**



**Kniese's Plumbing**  
Doug Kniese  
PA004105

3633 Old Easton Rd  
Doylestown PA 18902  
kniesesplumbing@gmail.com  
www.kniesesplumbing.com  
(215)348-3113



Open  
Sept. 29  
through  
Jan. 6

## Enchanting fairy tales come to life at the Mercer Museum!

mercermuseum.org  
Doylestown, PA



*Once Upon A Time... Exploring the World of Fairy Tales is a collaborative effort of the St. Louis Public Library and The Magic House, St. Louis Children's Museum and is made possible by a grant from the Institute of Museum and Library Services.*

MERCHANT MARKETPLACE



# URGENT CARE COMFORT

When you or someone you love is sick or injured, you want comfort, fast.

Comfort. You'll find it in our inviting reception area and welcoming smiles. At Doylestown Health Urgent Care there's comfort in knowing that you selected an urgent care center staffed exclusively by board-certified Doylestown Health physicians. Open 365 days a year with extended hours; Urgent Care connects to your Doylestown Health medical records for seamless communication. Walk-in or check-in online, whatever is most comfortable for you!

**Extended Care Hours. Convenient Location.**  
4259 West Swamp Road, Doylestown, PA 18902  
Monday-Friday 8 am to 9 pm  
Saturday, Sunday and Major Holidays 9 am to 4 pm  
7 days a week, 365 days a year

[DoylestownHealth.org/UrgentCare](http://DoylestownHealth.org/UrgentCare)



DIGGING • GENERATORS • WELDERS & LIGHTS • HEATERS & FANS • TOOLS • PLUMBING • PAINTING • LAWN & GARDEN  
MOVING • PRESSURE WASHERS • TRAILER RIGS • HAND TOOLS • CONCRETE EQUIPMENT • FLOOR CARE  
& INSTALLATION • AIR COMPRESSORS • SAWS • BACKHOES • CHIPPERS •  
COMPACTORS • ROLLERS • PUMPS • GENERATORS • WELDERS & LIGHTS  
HEATERS & FANS • TOOLS • PLUMBING • PAINTING • LAWN & GARDEN • MOVING  
SAUGERS • HAND TOOLS • DRILLS • CONCRETE EQUIPMENT • FLOOR  
TOOLS • TRAILER RIGS • LIFTS • BACKHOES •  
ROLLERS • STUMP GRINDERS • GENERATORS •  
SAUGERS • HAND TOOLS • DRILLS • FLOOR  
COMPACTORS • ROLLERS • STUMP GRINDERS • WELDERS & LIGHTS  
HEATERS & FANS • PRESSURE WASH

**CLASSIC SERVICE SINCE 1970!**

**the BEST 2016**  
TheIntelligence

**WE DELIVER!**

**GTR**  
Hatfield • Doylestown • Horsham

**CONTRACTING AND INDUSTRIAL**      **HOME OWNERS AND LANDSCAPING**

[www.GeorgesToolRental.com](http://www.GeorgesToolRental.com)





# Taking the Wheel in Retirement



Classic continuing care retirement living rolls into the next generation at Pine Run with the very real benefit of four decades of experience.

Fringetree Court is situated for every best advantage. The sophistication of town in a park-like setting, stunning apartments, and an inside garage for those who want to tuck in their cars bring satisfying rewards.

A member of Doylestown Health, Pine Run also offers independent living cottages, personal care suites, secure memory care, and a 5-star rehabilitation center.

**Good to know!**



**Pine Run**  
 Retirement Community | Lakeview  
 The Garden | Health Center  
 Member of Doylestown Health



 **LeadingAge** EOE

**Call 800-992-8992.**

777 Ferry Road, Doylestown, PA 18901

[pinerun.org](http://pinerun.org)



# Congratulations Doylestown Township on 200 Years!

## We're Your Bridge to Success

At Covenant Bank, each business is paired with an experienced team which includes a Commercial Lender, Deposit Relationship Manager, and experienced Branch Personnel. You will receive the best combination of professional expertise and personal attention we have to offer.

Visit us at [YourCovenantBank.com](http://YourCovenantBank.com) to hear what our customers have to say.



**Covenant Bank**

60 N. Main Street | Doylestown, PA 18901

[www.YourCovenantBank.com](http://www.YourCovenantBank.com)

Member FDIC



# MERCHANT MARKETPLACE



DELAWARE VALLEY  
UNIVERSITY

**UNIQUE** EDUCATION  
EXPERIENCE

Undergraduate • Graduate • Continuing and Professional Studies

700 E. Butler Ave., Doylestown, PA 18901 | [delval.edu](http://delval.edu)



**EISEMAN**  
WE HAVE YOU COVERED



**50 YEARS OF EXCEPTIONAL ROOFING INSTALLATION**

EISEMAN CONSTRUCTION is proud to be a GAF Master Elite Contractor and a CertainTeed Master Shingle Applicator.

P 215-345-9159 EISEMAN.BIZ



**CORNERSTONE** Clubs

Improving the health and wellbeing of  
Central Bucks ... one person at a time.



Doylestown 215.794.3700    New Hope 215.862.2200    Warrington 215.918.5900

[www.cornerstoneclubs.com](http://www.cornerstoneclubs.com)



**FULL SERVICE  
SEPTIC SYSTEM  
MANAGEMENT**  
24 HOUR EMERGENCY SERVICE

CALL TODAY TO SCHEDULE YOUR SERVICE  
**(215) 443.0650**

**RESIDENTIAL SERVICES**

- PUMPING, LOCATING & REPAIRS
- INSPECTIONS FOR HOME SALES
- NEW SYSTEM DESIGN & INSTALLATION
- PUMP REPAIRS
- DRAIN CLEANING

**COMMERCIAL SERVICES**

- GREASE TRAP CLEANING
- CAR WASH PIT CLEANING
- HI VAC & JETTING SERVICE
- VIDEO PIPE INSPECTIONS
- WASTEWATER HAULING

**The FRANC Difference**

- An experienced & highly-trained team
- A diverse fleet of trucks & tools
- A commitment to meeting our customers' needs

Visit [www.FrancEnviro.com](http://www.FrancEnviro.com) for a coupon — USE CODE DNL

24 HOURS A DAY, 7 DAYS A WEEK • SERVING SOUTHEASTERN PA





# MERCHANT MARKETPLACE



## DOYLESTOWN COMMERCE CENTER PREMIER CLASS "A" OFFICE SPACE



Childcare

100% Emergency Power Backup

Cafe

Contact Kurt Eisenschmid at Penn & Grant Realty Corporation - 215-489-3800

Imagine your AD here.

Our ads reach over 6,000 households and are very affordable!

For more information regarding ad rates and deadlines please email:  
[info@doylestownpa.org](mailto:info@doylestownpa.org)

## Where Beautiful Landscapes Begin.



For the last 26 years, Nickett Landscaping has had the pleasure of helping homeowners get the most out of their yards. Whether you are looking for a new backyard patio lined with lush, seasonal plantings, or you are looking to remove standing water in your lawn or driveway, we can help. Call today at 215-345-1385 to start planning for your next design.

### Design

- ✓ New & Renovation
- ✓ Outdoor Landscape Lighting
- ✓ Lawn & Driveway Drainage

### Construction

- ✓ Patios, Walls & Walkways
- ✓ Ponds, Fountains & Waterfalls
- ✓ Natural Stone Steps

### Maintenance

- ✓ Lawn Renovation
- ✓ Spring & Fall Clean-ups
- ✓ Mulching & Weeding
- ✓ Lawn Mowing
- ✓ Lawn Applications
- ✓ Tree & Shrub Spraying & Fertilizing



**NICKETT**  
LANDSCAPING

DESIGN • CONSTRUCTION • MAINTENANCE

**215-345-1385**

We return all calls within 24 hours,  
**most** the same day!

*Celebrating 26 Years in Business*

Fully Licensed & Insured • PA Certified

General Information

425 Wells Road  
Doylestown, PA 18901



Phone: (215) 348-9915

Fax: (215) 348-8729



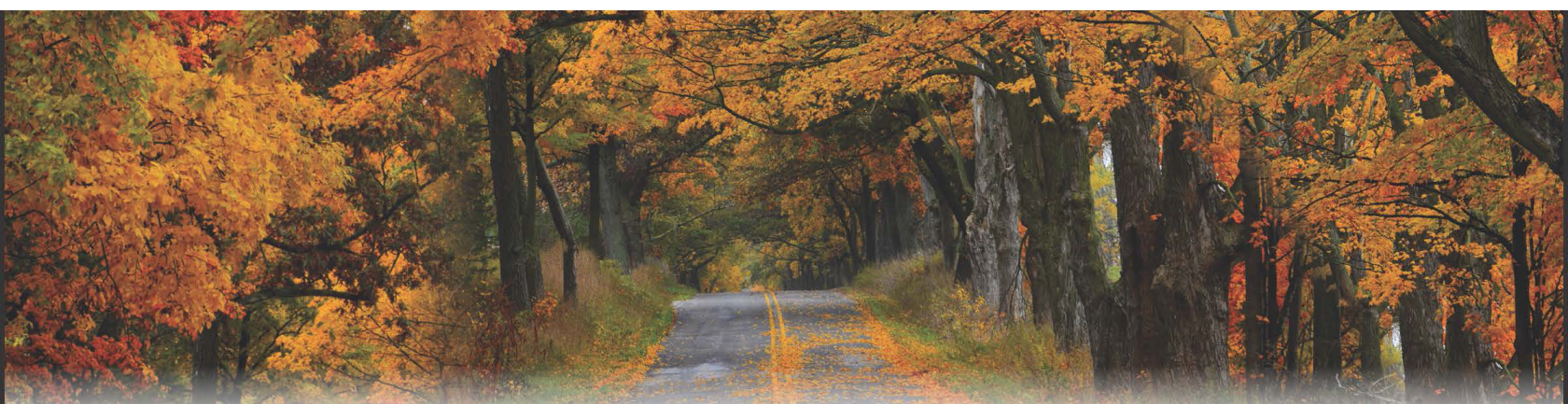
Monday - Friday 8:30-4:30



[info@doylestownpa.org](mailto:info@doylestownpa.org)



[www.doylestownpa.org](http://www.doylestownpa.org)  
[www.doylestownrec.com](http://www.doylestownrec.com)



**Wherever the road takes you, count on Thompson.**

Experience The Thompson Difference. We service ALL makes and models.

**THOMPSON**



DOYLESTOWN | WILLOW GROVE  
1800THOMPSON.com | 1-800-THOMPSON